

2004 Summer FLUG - ModernTech Electronic Delivery/Indexing Workshop



Electronic Delivery/Indexing

Welcome to the ModernTech Electronic Delivery/Indexing

Introduction

This workshop will demonstrate the Electronic Delivery Interface and Indexing tools. This training applies to Consultants, Sub-Consultants and In-House FDOT.

To take full advantage of this one hour session, please don't hesitate to ask questions.

Workshop Overview

This workbook contains exercises designed to familiarize you with the features below:

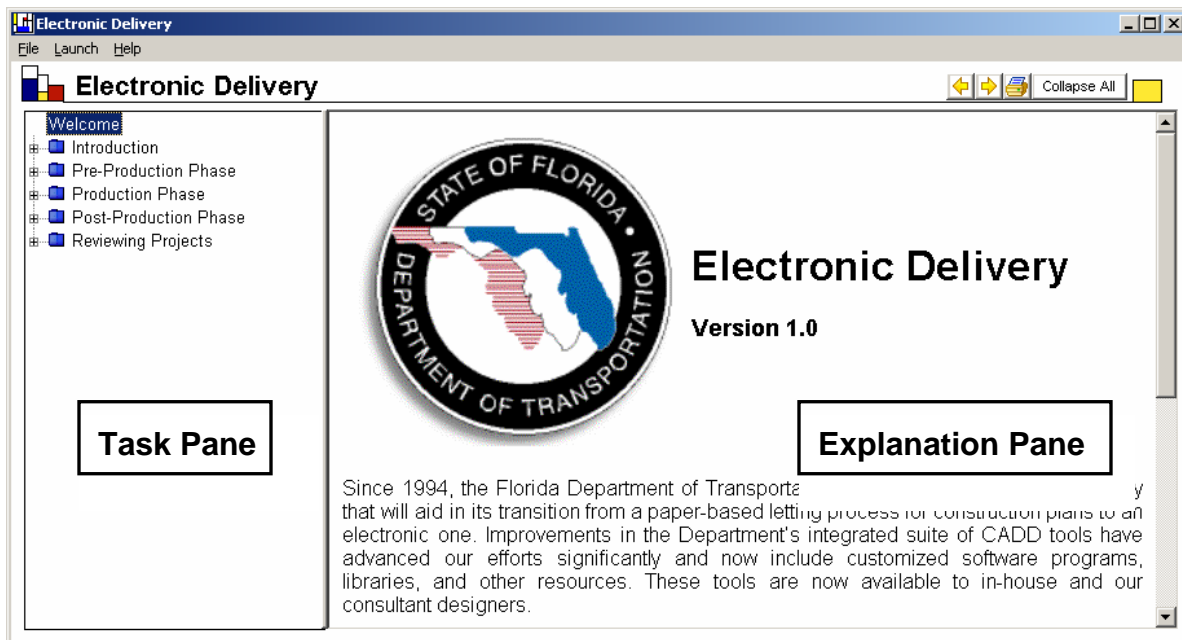
- Electronic Delivery Interface
- Indexing your Project

2004 Summer FLUG - ModernTech Electronic Delivery/Indexing Workshop

Electronic Delivery Interface

Electronic Delivery appears and behaves like a web browser. Clicking or expanding items in the Task Pane (left side of window), results in instructional content being displayed in the Explanation Pane (right side of window), shown in Figure 3. As we will see during the course progression, software applications can be launched in some cases.

Tip To reactivate a highlighted option, move off the item and then re-select the item you wish to activate.



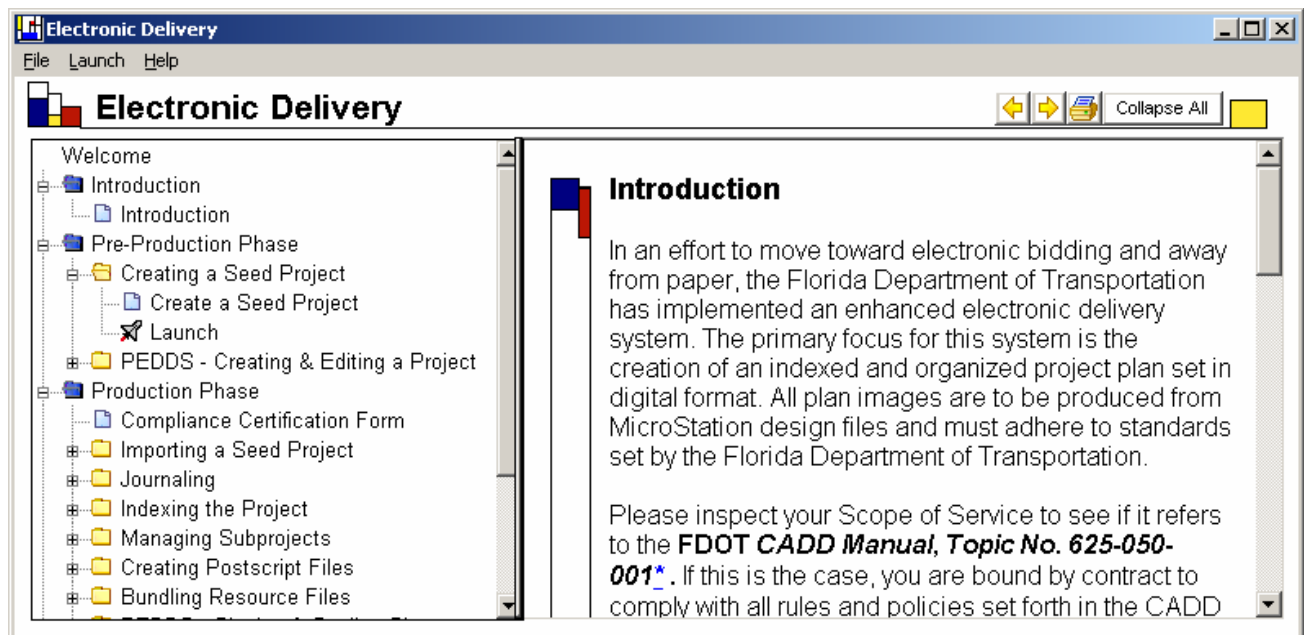
Electronic Delivery is broken down into four major components following the Welcome and Introduction tabs, as seen in the figure below. These components are: Pre-Production Phase, Production Phase, Post-Production Phase and Reviewing Projects. Each of these items can be expanded by clicking the '+' sign on the tree view within the Task Pane.

2004 Summer FLUG - ModernTech Electronic Delivery/Indexing Workshop



Clicking any of the icons in the Task Pane results in an expanded display of associated text within the Explanation Pane of the Electronic Delivery window.

- Click the Folder icon (📁) to display a brief explanation as to why this procedure is done.
- Click the Sheet icon (📄) to activate the associated HTML help pages for the program.
- Click the Shuttle icon (✈️) to launch the appropriate program associated with the process.



2004 Summer FLUG - ModernTech Electronic Delivery/Indexing Workshop

Exercise 1 - Indexing the Project

In order to document, access, and navigate electronic plans, a project must be properly indexed. FDOT strongly recommends the use of the provided **Indexer** program to produce the requisite index files for Electronic Projects. Indexer requires that designers use tools, such as the **SheetInfo** tool in the FDOT 2002 Site Menu, to place special tags on each sheet. These tags can be mined (extracted) and stored by the Indexer, greatly reducing the time required for the indexing process. The process also ensures that all files are sorted to match the FDOT's standards for delivery.

Indexer creates the **ProjectIndex.xml** file in the project root folder. The data is stored in a standardized **XML** format and must be delivered to the Department with all other electronic project data.

To Open a Project

- 1 In the Indexing the Project folder, click **Launch** to start the **Electronic Delivery Index System** program.

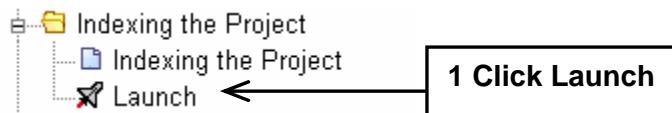
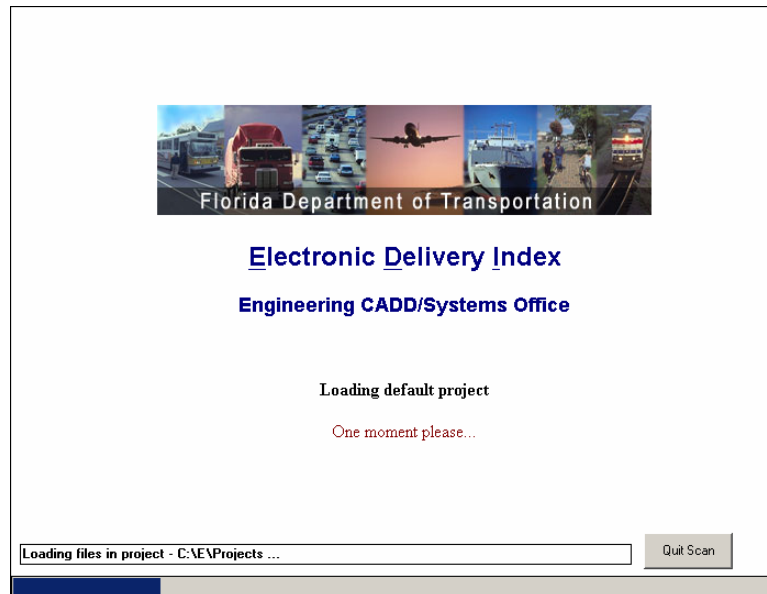
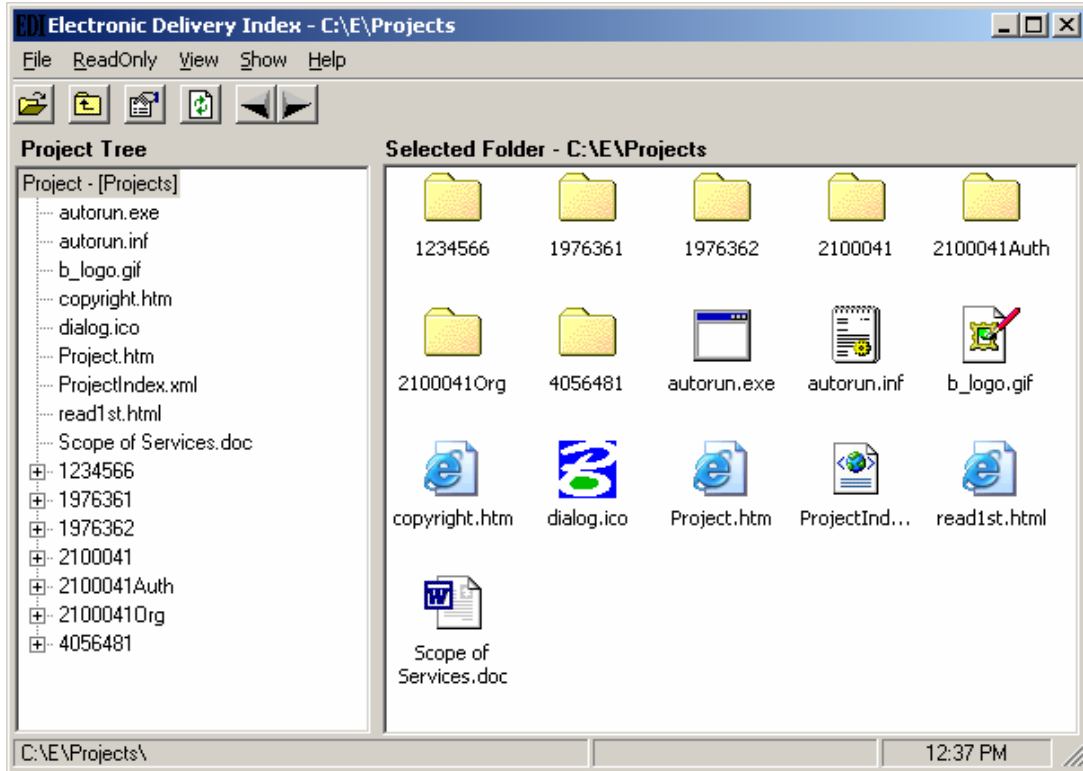


Figure 1: Launching the Electronic Delivery Indexer




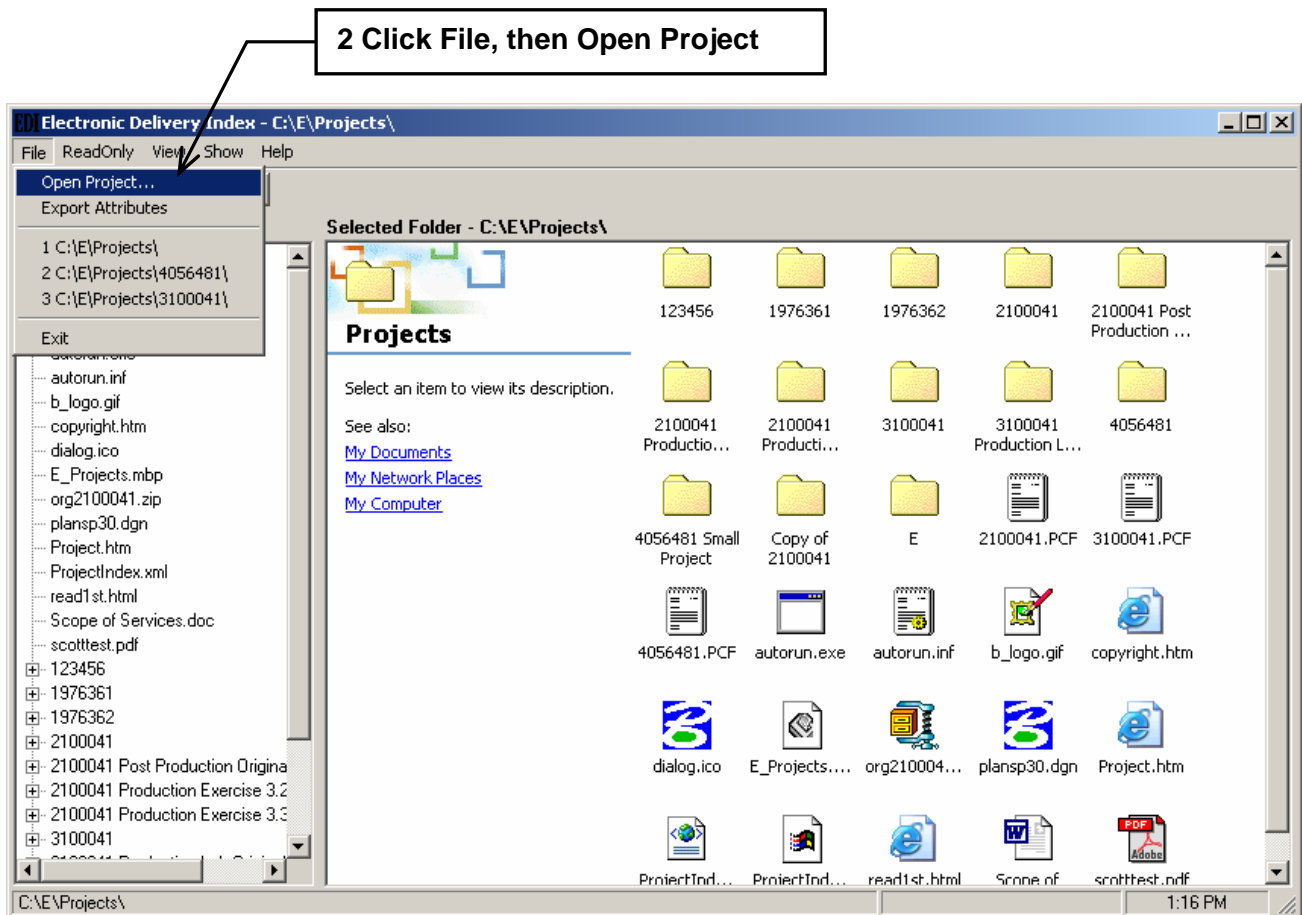
2004 Summer FLUG - ModernTech Electronic Delivery/Indexing Workshop

Note The first time **Electronic Delivery Indexer** program is launched, the Indexer scans the E:\Projects\ directory and loads ALL projects from the projects directory as shown in Figure 50.



2004 Summer FLUG - ModernTech Electronic Delivery/Indexing Workshop

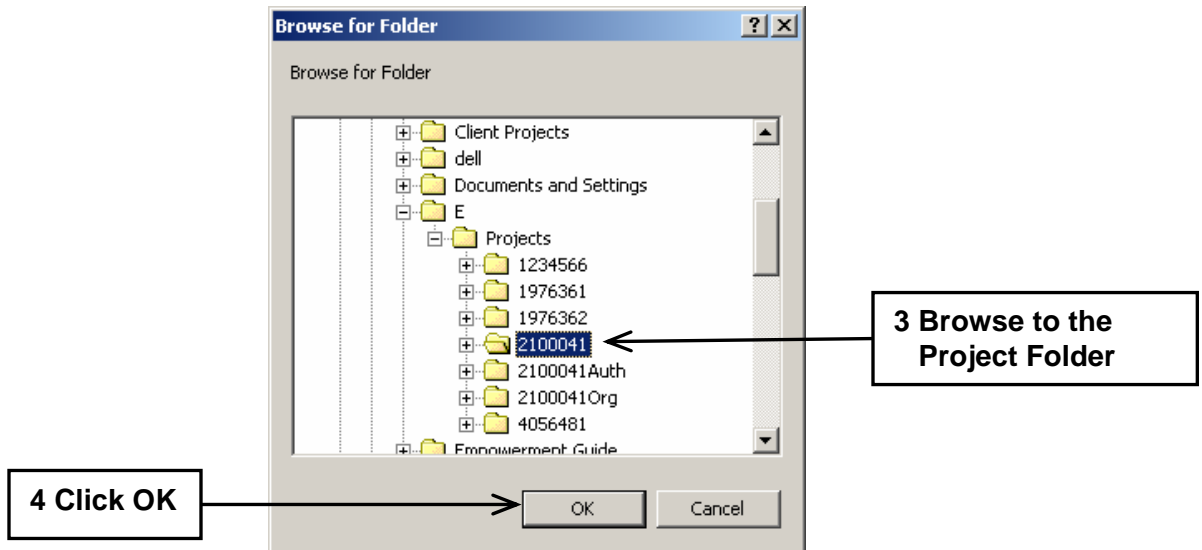
- 2 On the **File** menu, click **Open Project** – or – click the **Open** button  on the toolbar. Browse for Folder appears.



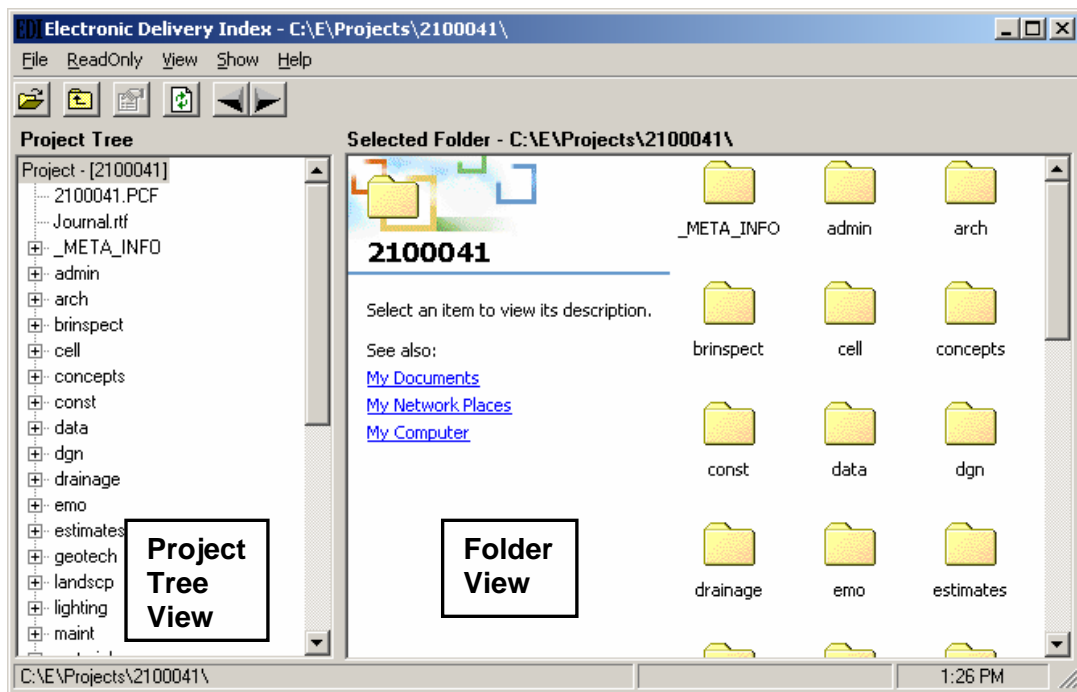
Note If you return to an index for later work, Indexer remembers which project was previously loaded.

2004 Summer FLUG - ModernTech Electronic Delivery/Indexing Workshop

- 3 In Browse for Folder, browse through the directory to the Projects folder and select the project. For this exercise, the project is 2100041.
- 4 Click **OK**. The project is now loaded and Electronic Delivery Indexer appears.



Note The left pane (Project Tree View) of the **Index** program contains the directory hierarchy. The right pane (Folder View) of the **Index** program displays the directory icons of the project, as shown below in Figure 53.



2004 Summer FLUG - ModernTech Electronic Delivery/Indexing Workshop

Indexing the Project: Creating Companion XML Attribute Files (Data Mining)

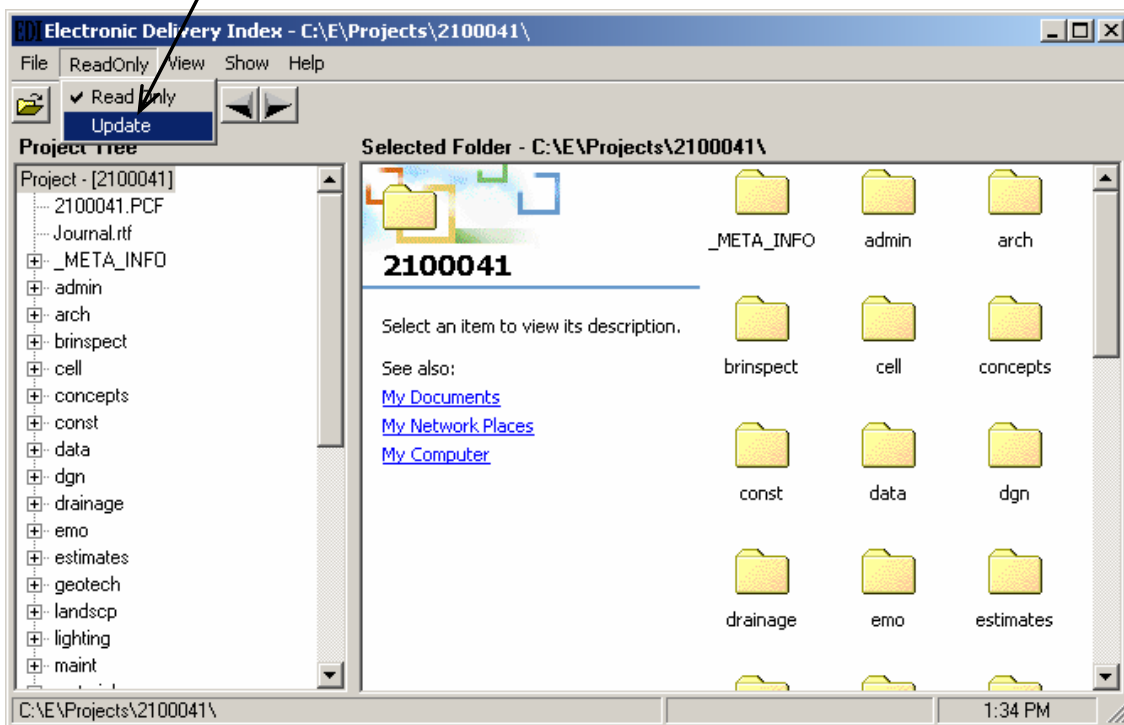
Before the creation of the project index itself, the next step of the indexing procedure creates and populates companion XML files that correspond to each of the files in the project. Each companion XML file contains meta data about its associated file that aids in the indexing process. The meta data found in the companion XML file for associated graphics files is “mined” from the associated file using automated processes. Data mining is a term used frequently in reference to Internet or database data retrieval. This process is actually extracting data from the companion XML file’s associated design files. In the case of a design file, among other things, the mining process is looking for tagged sheet information providing such things as the number of plan sheets in the design file, the coordinates, both state plane and actual, of the plot borders, and sheet labeling information found in the sheet border such as sheet description, sheet number, FIN, etc. The SheetInfo tool, found in the FDOT 2002 Site Menu, aids the designer in placing this information in the design file for mining later by the indexing process.

By default, the project is set to Read Only. This setting must be changed to Update prior to mining any data.

To create companion XML attribute files (data mining)

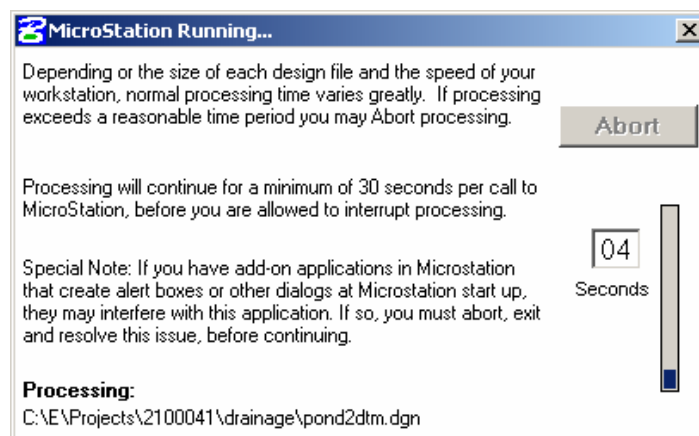
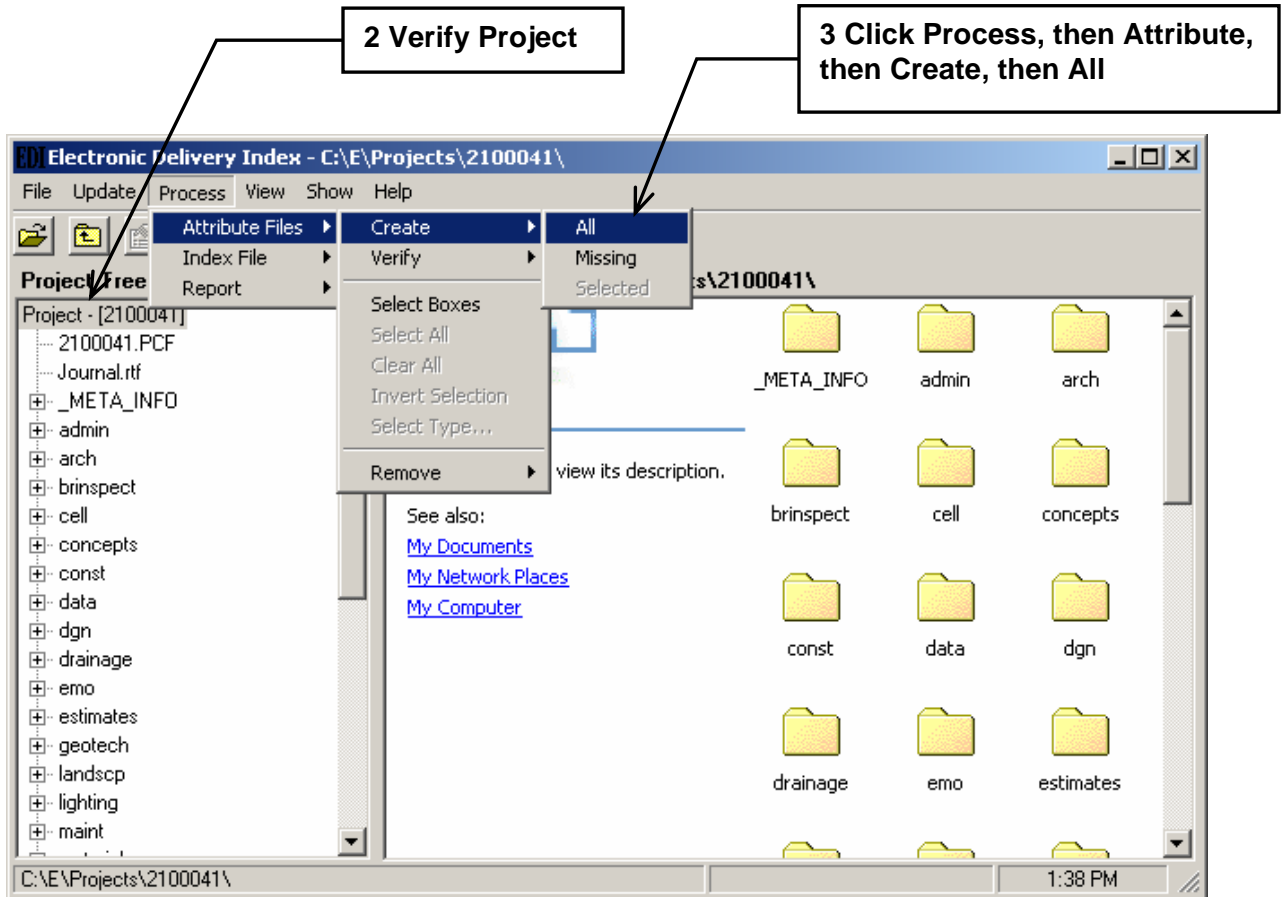
- 1 On the **ReadOnly** menu, click **Update**. An expanded Electronic Delivery Index interface appears.

1 Click ReadOnly, then Update



2004 Summer FLUG - ModernTech Electronic Delivery/Indexing Workshop

- 2 Verify that the project is selected.
- 3 On the **Process** menu, click **Attribute Files**, point to **Create**, then click **All**. MicroStation Running appears. When the process is completed, the dialog box disappears.



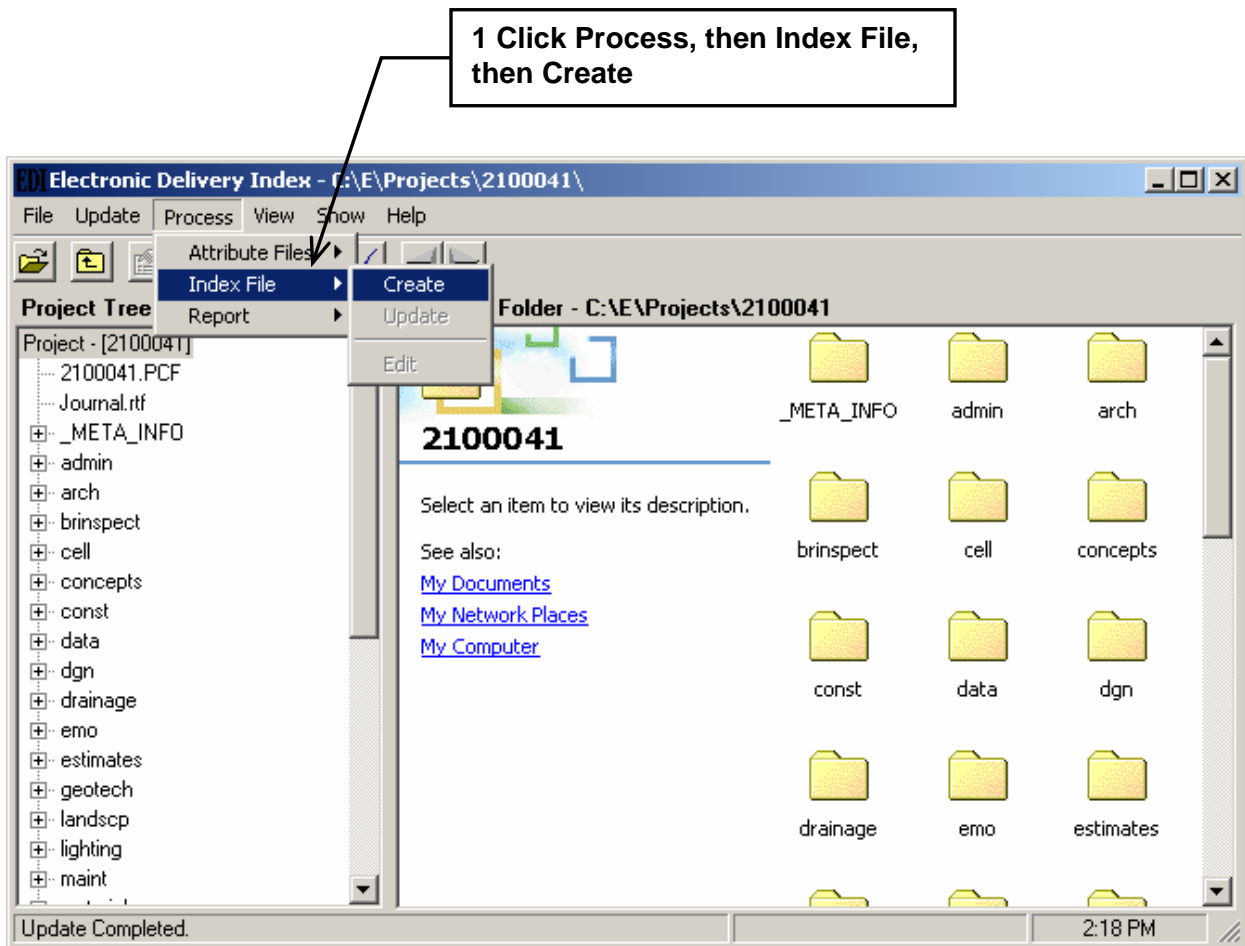
Note While the MicroStation Running message appears, the companion XML files are being created.

2004 Summer FLUG - ModernTech Electronic Delivery/Indexing Workshop

Indexing the Project: Creating the Index

To create an index

- 1 On the **Process** menu, click **Index Files**, and then click **Create**. Verify Attribute Files appears.



Note The index file cannot be produced until the companion XML files are created

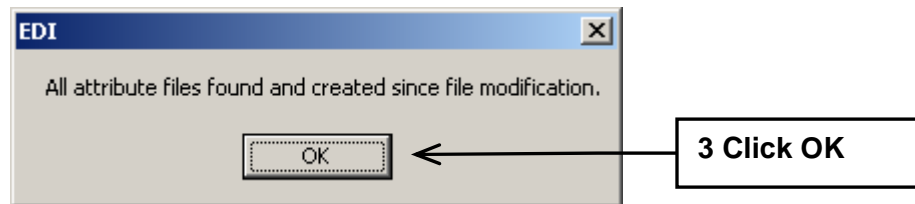
2004 Summer FLUG - ModernTech Electronic Delivery/Indexing Workshop

- From Verify Attribute Files, Select **Yes**. EDI opens.

Note Besides verifying that the attribute files exist, this process also verifies that the attribute files are not out of date by comparing the dates on the attribute file with those on the matching design files.

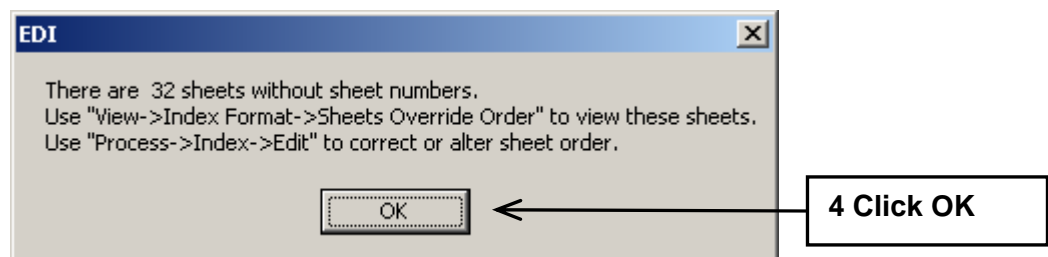


- From EDI, click **OK**. Another EDI message appears.

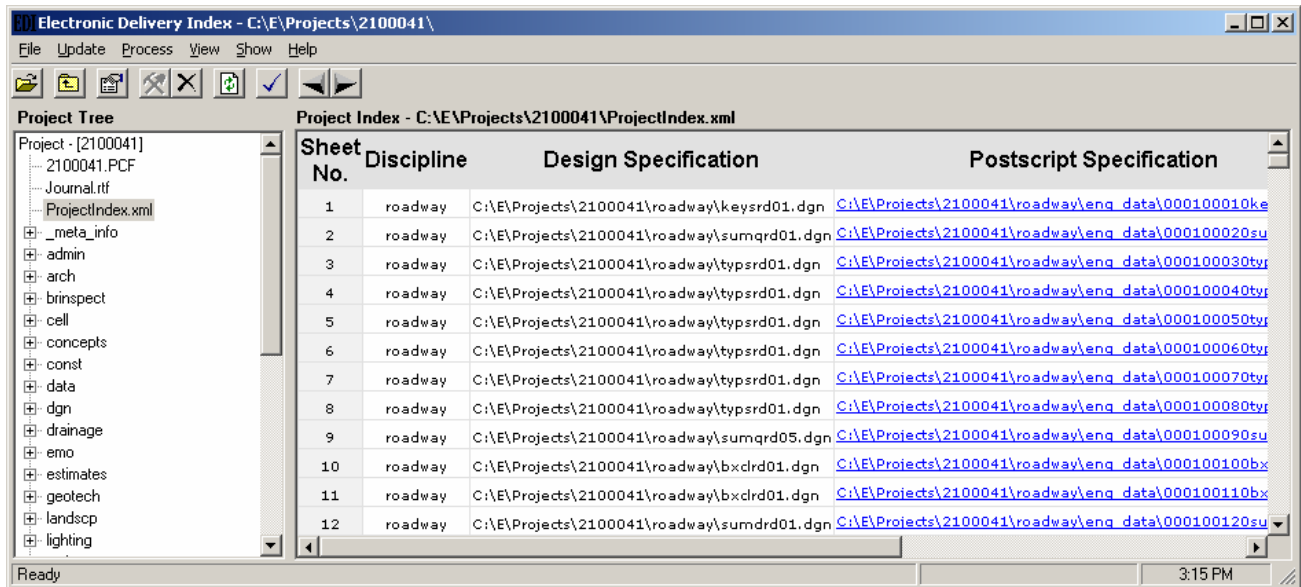


Note After the Indexer begins to process, the EDI **could possibly** deliver a message **similar** to the one displayed in Figure 60 upon completion.

- Click **OK**. Electronic Delivery Index appears with the Index created and the results displayed in the index view, as shown in Figure 61.



2004 Summer FLUG - ModernTech Electronic Delivery/Indexing Workshop



Note The **Postscript Specification** list, shown in Figure above, contains hyperlinks that point to PostScript files that do not yet exist. These files are created later in the Electronic Delivery Process. The file naming convention is pre-established here, using EDI compliance, and is used later by the FDOT MicroStation Batch Plot program. EDI compliance is referenced later in the Batch Plotting section.

Indexing Tips:

- You must run SheetInfo to Tag the border.
- Do not drop the border.
- GEOPAKS Sheet Clipping tool, in Version 2001, **Does Not** tag the border. You will need to run SheetInfo on each sheet.
- Place the Border in the sheet files until the new version of Sheet Info is released. It's just easier.
- If you use the PCF file when opening Microstation, SheetInfo will automatically fill in the FIN number.
- Educate your entire staff on the importance of ED and that all of those "xml" companion files are very important.
- Make sure your sub-consultants are using the latest version of Sitemenu and are running SheetInfo on their files.
- When you update any file that has already been indexed, the xml companion will have to be updated.
- When you delete a file after it has been indexed you need to delete the companion xml file.
- Don't forget the Electronic plan note when Signing and Sealing with PEDDS.
- Do not do any indexing operations after the project has been secured. If you do the project will not Authenticate.