

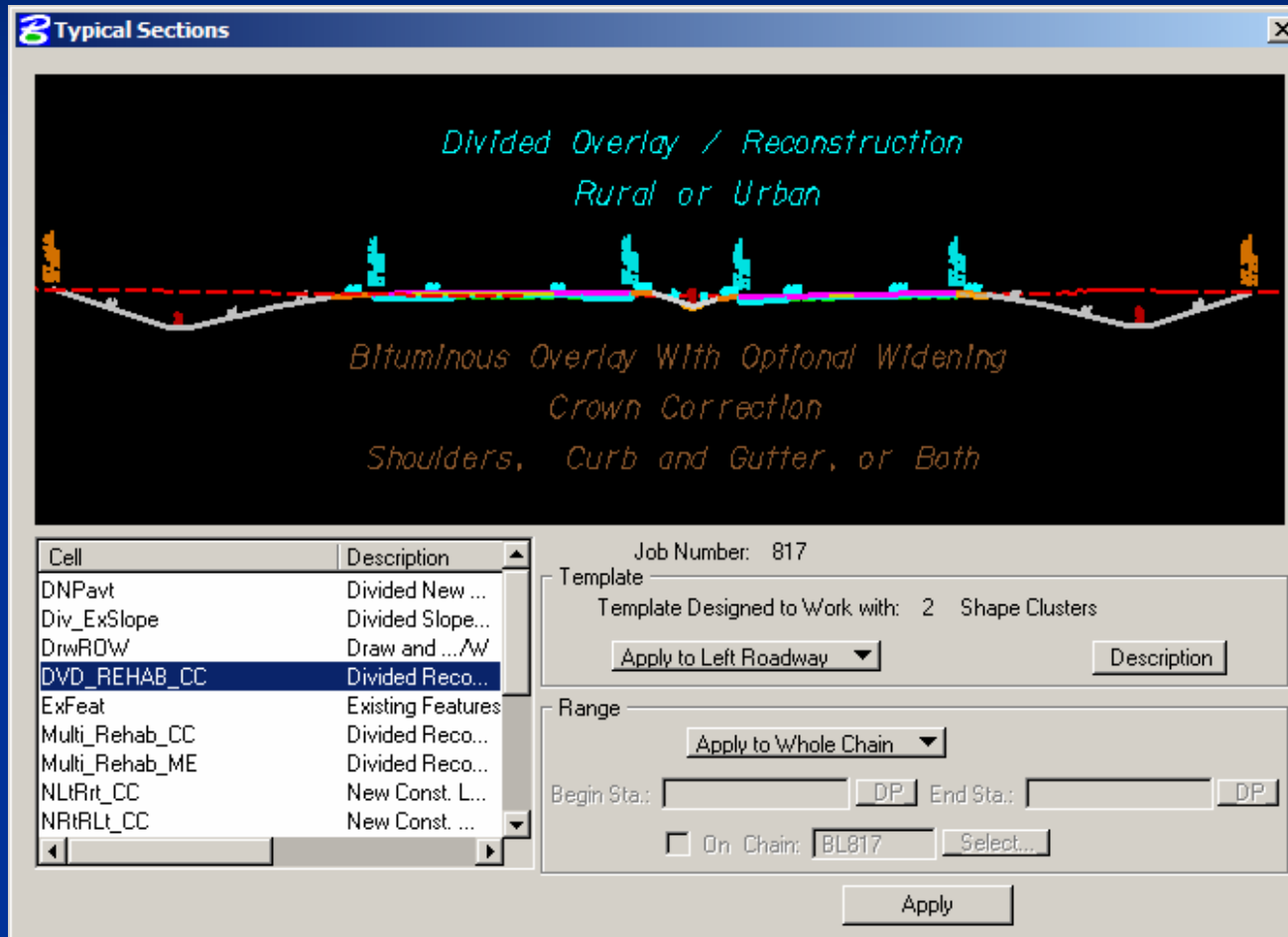
FDOT 2004 Cross Section Typical Sections

Denise Broom

FDOT Engineering/CADD Systems Office

(850)245-1600/SC 205-1600

Typical Section Generator



What's New

- * Brand new criteria delivered for Typical Section Generator and Drainage.
- * Limited files are being delivered.
 - ❖ Drainage Criteria Files
 - ❖ Input File Examples (You can still use input files. However, you will be responsible for updating to FDOT 2004 standards.)
- * All variables are found in one file (variables.x).
- * Editable Re-definable Variables (ERV's)

What's New

- * New criteria uses DDB features.
- * Very important!!!! Use the D&C. New criteria looks for attribute tags and adhoc on the elements.
- * Read the help documentation provided with the Typical Sections.
- * Criteria will flag cross sections with warnings. Not enough existing ground, slope problems etc.
- * New Seed file set up with models.
 - ❖ Rdxsrd
 - ❖ Xsshrd
 - ❖ Pattrd
 - ❖ Rdxsrd_shg

New Concepts

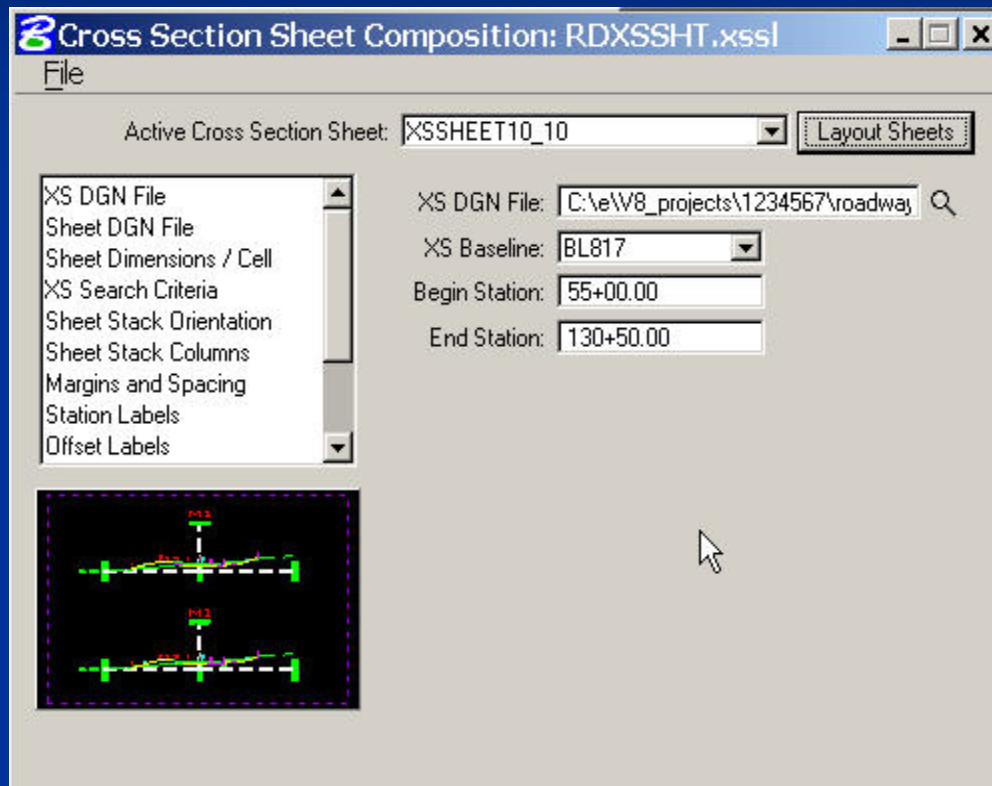
- * Median Lines (MedLn)
- * Ditch Profile Lines (SpDitch)
- * Match Lines (SRTD)
- * New Construction and Resurfacing supported in the same run

Warnings/Helpful Hints

- * GEOPAK does not recognize models when searching DGN files. (Pattern lines, Design Files)
- * The first dgn file of the dgn variables specified must exist or the program will not draw cross section elements
- * You must always have even numbers of edges of pavement or the cross sections will not draw
- * If you are rerunning sections over and over again and realize the drawing of elements at each run is getting noticeably slower, minimize MS and bring back up.
- * When running cross sections, there will be a pause when it gets to the ddb file. This is OK. GEOPAK is loading the ddb in the background and checking the symbology against the dgnlib.

Let's take a look!

Cross Section Sheet Composition Tool



- * No longer use layout input files to create sheets.
- * Cross Sections are now referenced to the sheets.
- * Change the scale of sheets as simply as choosing a different active sheet.

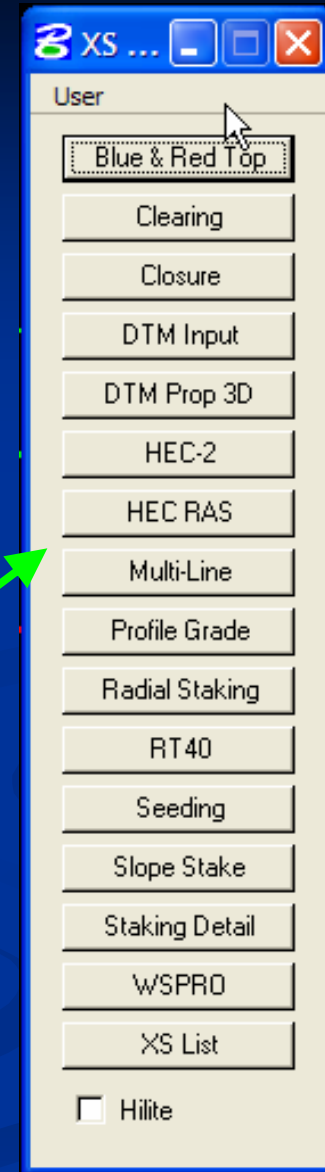
Cross Section Sheet Composition Tool

- * Caution: Project Manager does not save the changes made to the settings set up in the xssl file. It will save the xs dgn file, sheet dgn file, earthwork quantity file and the toggle to Detach Existing Sheets Before Processing.
- * If you want to change the settings within the xssl file, copy down locally to project.

Clip Sheets

Reports

- * New existing pavement slope reports are included in Typical Section Generator.
 - ❖ Divided Slope Text Report
 - ❖ Undivided Slope Text Report
- * Existing GEOPAK reports are still available



GeoTechnical/Utilities

- * Must use GeoTechnical tools for soil borings
- * 3D utility files to get utilities onto cross sections
- * Working on a 3pc file to draw utilities in at a depth of cover

Questions?????