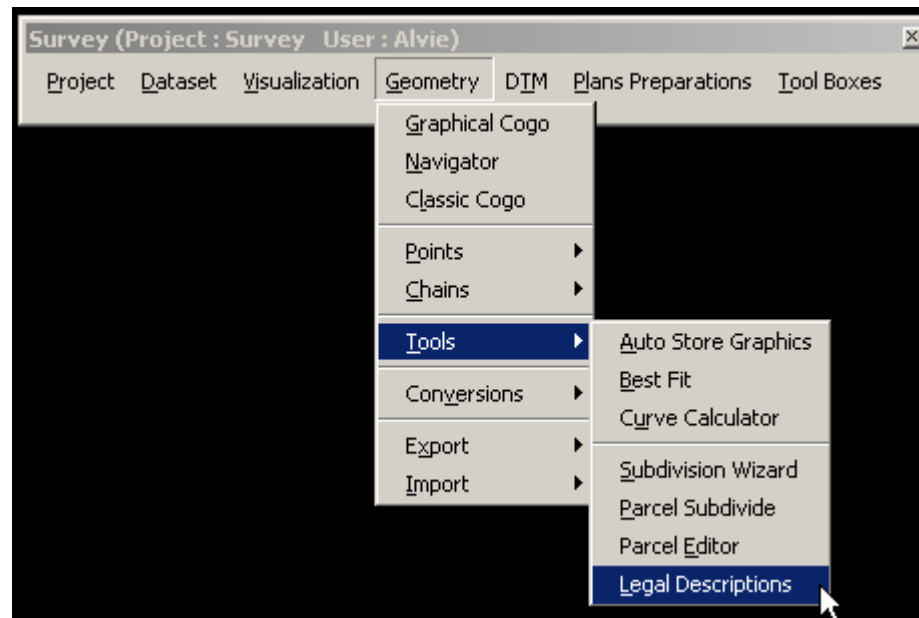


# Automated Parcel Descriptions

**Alvie F. Griffith, PSM**  
**Senior Survey Consultant**

# GEOPAK Survey 2004 Legal Descriptions Tool

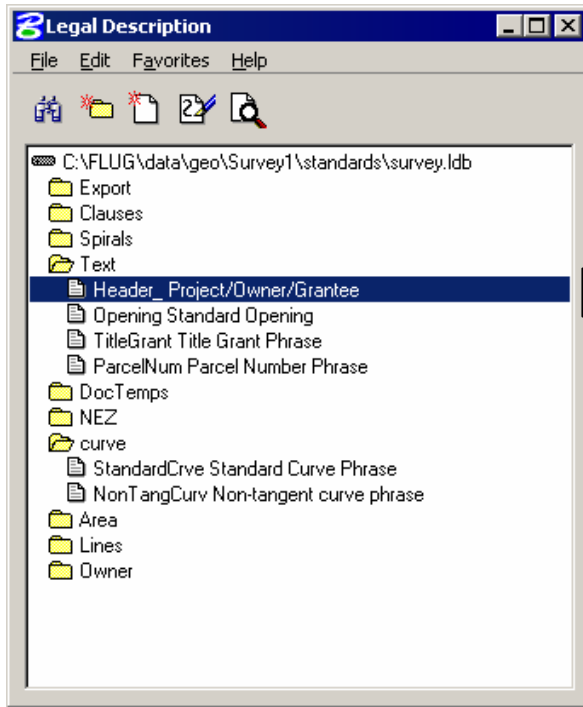


**From Geometry>Tools>Legal Descriptions**

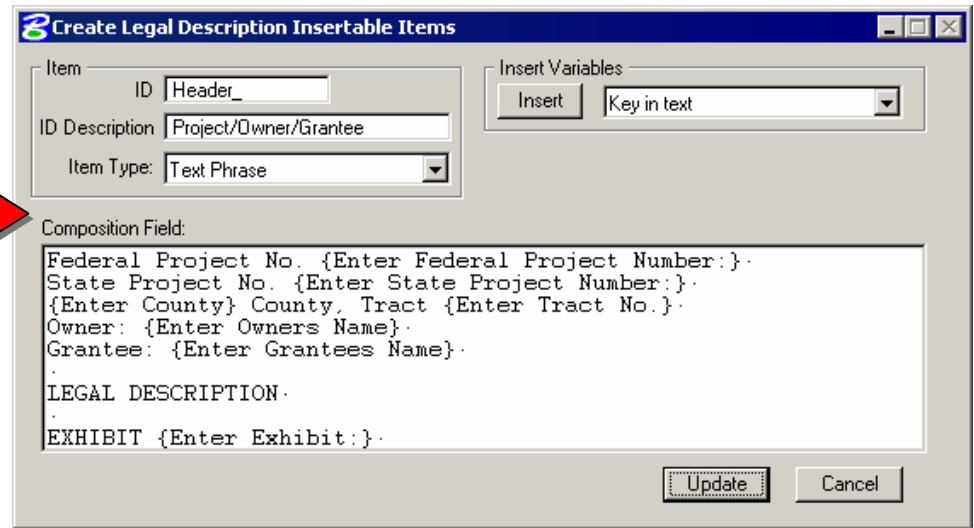
# Components Needed

- Legal Description Library (.ldb) File
- Legal Description Style
- GPK File with Geometric Data
- DGN File showing Geometric Data

# Legal Description Library (.ldb) File



Double Click



Item Detail

Legal Description Library

# Legal Description Style

**Define Styles**

Default Phrases | Precision | Bearing Format

Line Phrase : Lines\StdLine

Tangent Curve Phrase : curve\StandardCrve

Non-Tangent Curve Phrase : curve\StandardCrve

Spiral Phrase : Spirals\StndSpiral

Coordinate Phrase : Export\Coords\_

Area Phrase : Area\Standard\_Area

Document Template : DocTemps\StndrdDocTemp

Parcel Owner's Name Phrase : Owner\StndrdOwner

Chain Phrase :

OK Cancel

**Define Styles**

Default Phrases | Precision | Bearing Format

Sq.Ft. : 1

Sq.Mt. : 2

Acres : 5

Hectares : 6

NEZ (feet) : 2

NEZ (meters) : 3

Distance (feet) : 2

Distance (meter) : 3

Bearing : 1 sec.

OK Cancel

# Legal Description Style

**Define Styles**

Bearing Format | General | Pt. Geometry Phra

Deg. Min. Sec. Text Style

Degrees, minutes, seconds  
 Decimal degrees

Deg.:  Min.:  Sec.:

Direction Style

North 30° 45' 26" East North:   
 Northeast 30° 45' 26" South:   
 30° 45' 26" (azimuth) East:   
 30° 45' 26" Right (deflection) West:

Sample Bearings

S 89 deg. 30 min. 00 sec. E  
 N 44 deg. 30 min. 00 sec. W

Cardinal Direction Style

Text (Due North)  
 Standard

Wrap Bearings

Wrap bearings:

**Define Styles**

Bearing Format | General | Pt. Geometry Phra

Numbers

Alphabetic  
 Numeric

Sequencing

Alphabetic  
 Numeric

Case

Lower:  
 Upper:

Area Threshold

Acres:   
 Hectares:

Area Text Phrases

Acres:   
 Hectares:   
 Sq.Ft.:   
 Sq.Mt.:

Approximate Direction Style

northwest  
 Northwest  
 northwesterly  
 Northwesterly

Right/Left Text Phrases

Right:   
 Left:

Column Width:

Station Format

Feet:   
 Meters:

# Legal Description Style

**Define Styles**

Pt. Geometry Phrases | Parcel default Phrases | Chain default Phrases

Line to Line : a point

Line to Tangent Curve : the PC of a circular curve

Line to Non-tangent Curve : the PC of a non-tangent circular curve

Tangent Curve to Line : the PT of a circular curve

Non-tangent Curve to Line : the PT of a non-tangent circular curve

Compound Curve : a point of compound curvature

Reverse Curve : a point of reverse curvature

Line to Spiral : the start of a spiral curve

Spiral to Curve : the start of a circular curve

Curve to Spiral : the start of a spiral curve

Spiral to Line : the end of the spiral curve

OK Cancel

# Legal Description Style

**Define Styles**

Pt. Geometry Phrases | **Parcel default Phrases** | Chain default Phrases

First Line

Line: Lines\StdLine

Tangent Curve Phrase: curve\StandardCrve

Non-Tangent Curve Phrase: curve\StandardCrve

Body

Line: Lines\StdLine

Tangent Curve Phrase: curve\StandardCrve

Non-Tangent Curve Phrase: curve\StandardCrve

Last Line

Line: Lines\EndCommence

Tangent Curve Phrase: curve\StandardCrve

Non-Tangent Curve Phrase: curve\StandardCrve

OK Cancel

**Define Styles**

Parcel default Phrases | **Chain default Phrases**

First Line

Line: Lines\StdLine

Tangent Curve Phrase: curve\StandardCrve

Non-Tangent Curve Phrase: curve\StandardCrve

Body

Line: Lines\StdLine

Tangent Curve Phrase: curve\StandardCrve

Non-Tangent Curve Phrase: curve\StandardCrve

Last Line

Line: Lines\EndCommence

Tangent Curve Phrase: curve\StandardCrve

Non-Tangent Curve Phrase: curve\StandardCrve

OK Cancel

# Advantages of Use

- Less Time
- Less Typing
- Less Typos

# Less Time

- Staying in One Program
- Not Printing Out Plots or Descriptions

# Less Typing

- Most Statements Already Filled Out
- Only Need to Fill In Changed Information for Common Statements

# Less (Fewer) Typos

- Easier to Compare Legal vs. Graphics
- Most Data is Extracted from the GPK

# Questions?

[Alvie.Griffith@Bentley.com](mailto:Alvie.Griffith@Bentley.com)