

Why Use Text and Dimension Styles?

Prepared for:

2006 Spring FLUG Conference
May 31 - June 2, 2006
Cape Canaveral, Florida

Speaker: Mark Mates, ProSoft

MicroStation® offers many tools for annotating and dimensioning drawings, including the use of **styles**. Styles allow you to change and update text and dimension settings on a global basis, offering an effective way of managing CAD standards. Come explore how the benefits of using text and dimension styles will impact your corporate workflow. Based on excerpts from the **MicroStation Fundamentals** reference manual and the **MicroStation Power User** training manual by ProSoft.



ProSoft **NET**

1776 North State, Suite 200
Orem, Utah 84057
(888) 263-0393

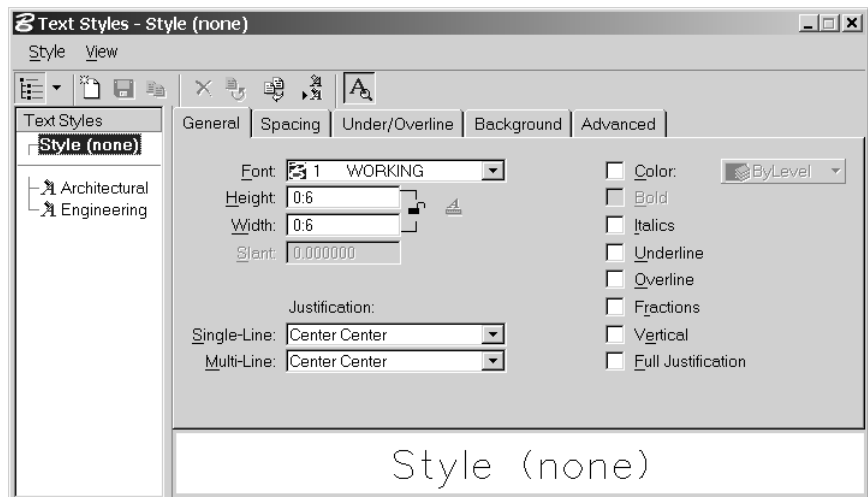
www.prosoftnet.com
info@prosoftnet.com

MicroStation is a registered trademark of Bentley Systems, Inc.

Introduction to Text Styles

MicroStation allows you to define and save **text styles** that can be applied to new and existing text. Text styles simplify text placement by predefining all text formatting options. When you activate a text style, MicroStation automatically sets up the active text parameters to match the text style, thereby eliminating the need to set individual text parameters each time you place text. Text styles can be activated in the Tool Settings window when you select a text placement tool. Text styles are defined in the Text Styles dialog box. To access this dialog box, choose **Element > Text Styles** in the MicroStation menu bar.

Figure 1
The Text Styles Dialog Box



Why Use Text and Dimension Styles?

Creating Text Styles

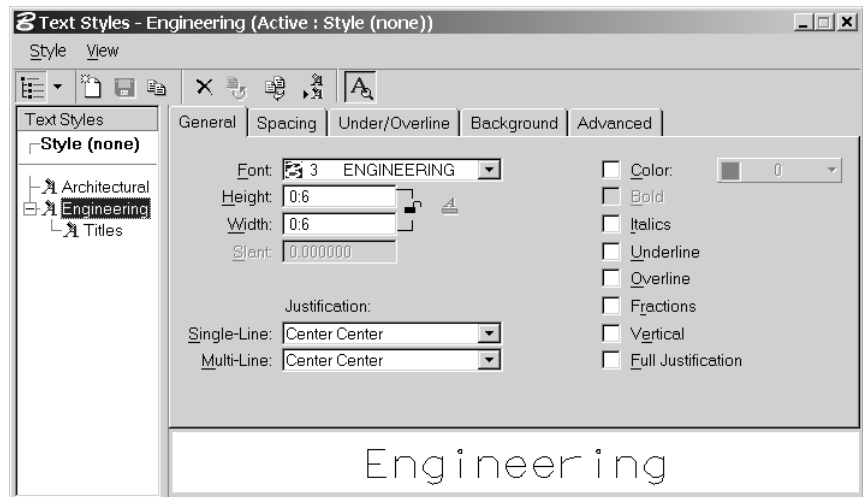
To create a text style, click on the **New** icon in the Text Styles dialog box or choose **Style > New** from the menu bar in the dialog box. You can also create a text style from the Key-in window by entering **textstyle new** followed by the name of the text style. For example, to create text style called **Standard Notes**, you would enter **textstyle new standard notes**.

Creating Child Text Styles

To make the creation of multiple text styles more efficient, you can create child text styles that are based on a parent style. This way, you only have to define the settings that are unique to the child style. Settings you define in the child style override the equivalent settings in the parent style, but the rest of the settings in the child style remain linked to the parent style and are updated automatically when the parent style is edited.

To create a child style, select **New Child** from the right click menu in the Text Styles list box. Alternatively, you can create a new style using the procedure described below and set the **Parent Style Name** option to the desired parent style in the **Advanced** tab. You can also drag the style name onto the parent style in the **Text Styles** list box. The settings in the child style are automatically updated to match the parent style. You can then define any override settings that are unique to the child style. The Text Styles list box reflects parent-child relationships in the tree structure.

Figure 2
Parent and Child Text Styles in the Text Styles Dialog Box



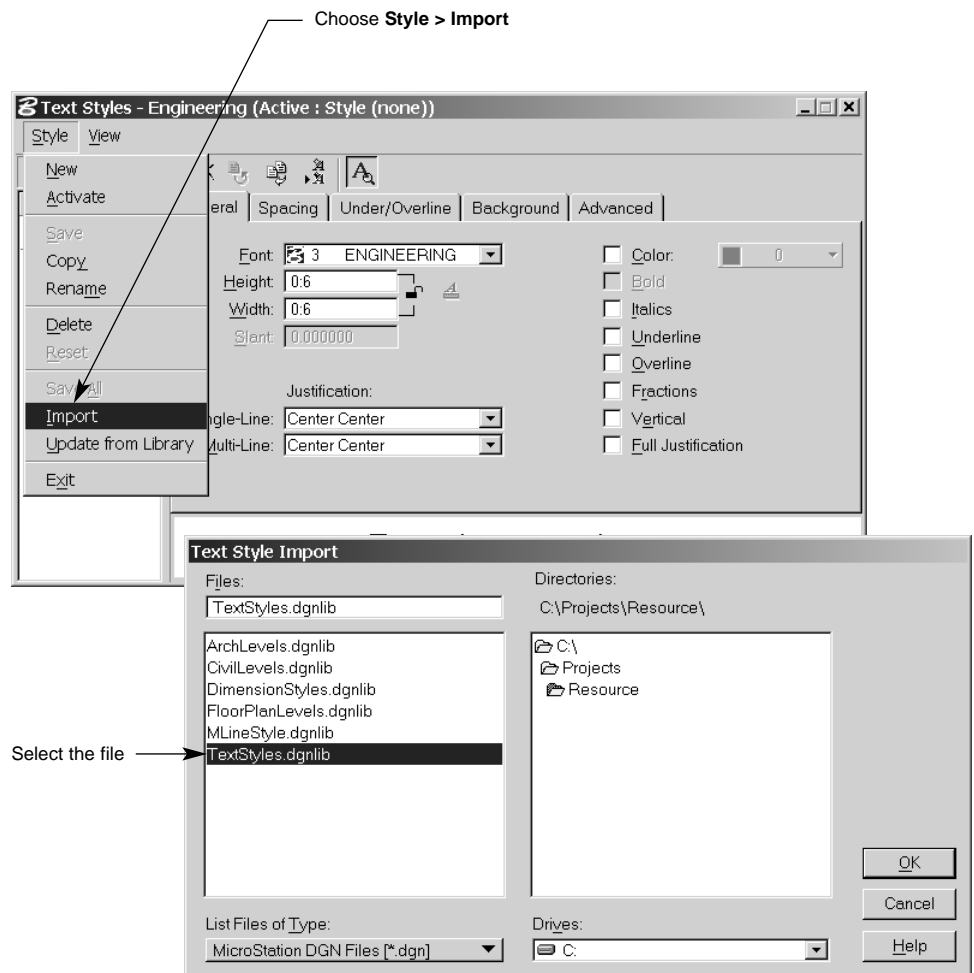
To create a text style:

1. Open the Text Styles dialog box (**Element > Text Styles**)
2. Click on the **New** icon or choose **File > New** from the menu bar in the dialog box.
3. In the Text Styles list box, click on the **Untitled - 1** style and edit the style name as desired.
4. OPTIONAL: If you want the new style to be a child style, set the **Parent Style Name** option in the **Advanced** tab.
5. Set the other style settings as desired in the tabs.
6. Click on the **Save** icon or choose **File > Save** from the menu bar in the dialog box to save the new style.

Importing Text Styles

Rather than create text styles from scratch, you can import existing text styles from other design files and DGN libraries. When you use this option, all text styles in the source file are imported into the active design file.

Figure 3
Importing Text Styles



To import text styles:

1. Open the Text Styles dialog box (**Element > Text Styles**).
2. Choose **File > Import** from the menu bar in the dialog box. The Text Style Import dialog box appears.
3. Navigate to the storage directory of the source design file or DGN library that contains the text styles you wish to import.
4. Select the source file.
5. Click the **OK** button to import the text styles.

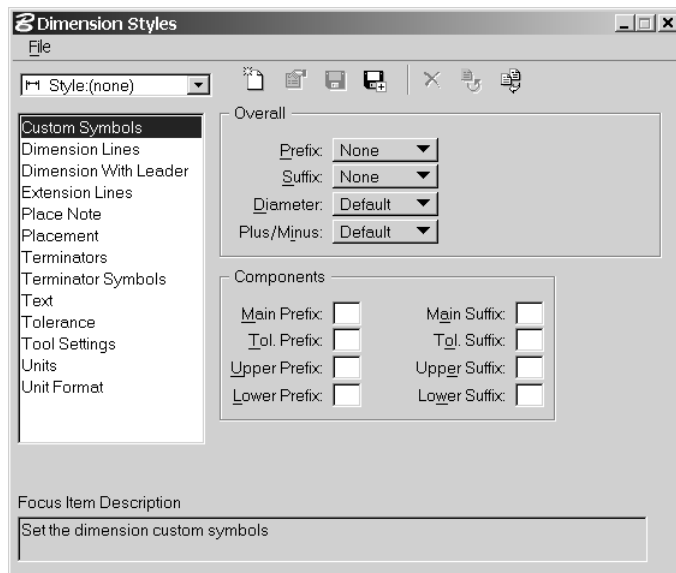
Introduction to Dimension Styles

This section will introduce you to MicroStation's dimension tools and the settings that control the appearance and behavior of dimension styles.

Dimension Settings

Before placing a dimension, you may wish to adjust the settings that control the appearance and behavior of dimensions. For example, you may wish to set the height and width of dimension text, the placement method, the dimension units and the terminator style. The dimension settings are organized by category in the Dimension Styles dialog box. To access this dialog box, choose **Element > Dimension Styles** from the MicroStation menu bar.

Figure 4
The Dimension Styles Dialog Box



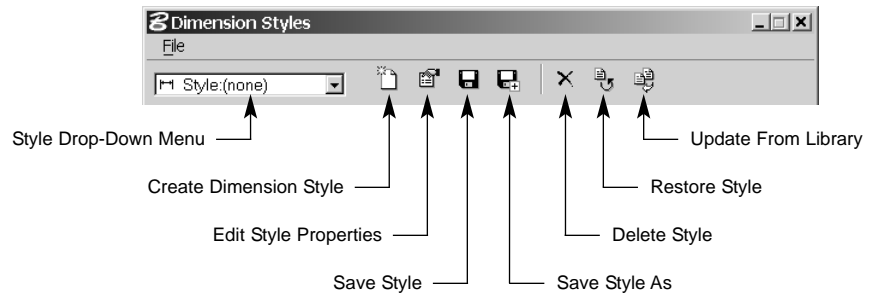
Why Use Text and Dimension Styles?

Dimension Styles

To make the setup and placement of dimensions easier, MicroStation allows you to define and save **dimension styles** that store all dimension formatting settings. When you activate a dimension style, MicroStation automatically sets up the active dimension parameters to match the dimension style, thereby eliminating the need to set individual dimension parameters each time you place a dimension. Dimension styles can be activated in the Tool Settings window when you select a dimension placement tool.

The options for creating, editing, saving and deleting dimension styles are located in the toolbar at the top of the Dimension Styles dialog box (**Element > Dimension Styles**).

Figure 5
The Dimension Styles Tools



Create Dimension Style

Opens the Create New Style dialog box, where you can enter a name and description for a new dimension style.

Delete Style

Deletes the active dimension style.

Edit Style Properties

Opens the Edit Style Properties dialog box, where you can edit the name and description of the active dimension style.

Reset Style

Restores the active dimension style to its last saved state.

Save Style

Saves changes to the active dimension style.

Save Style As

Saves the active dimension style under a different name.

Style Drop-Down Menu

Displays a list of available dimension styles. You can activate a dimension style from this menu.

Update From Library

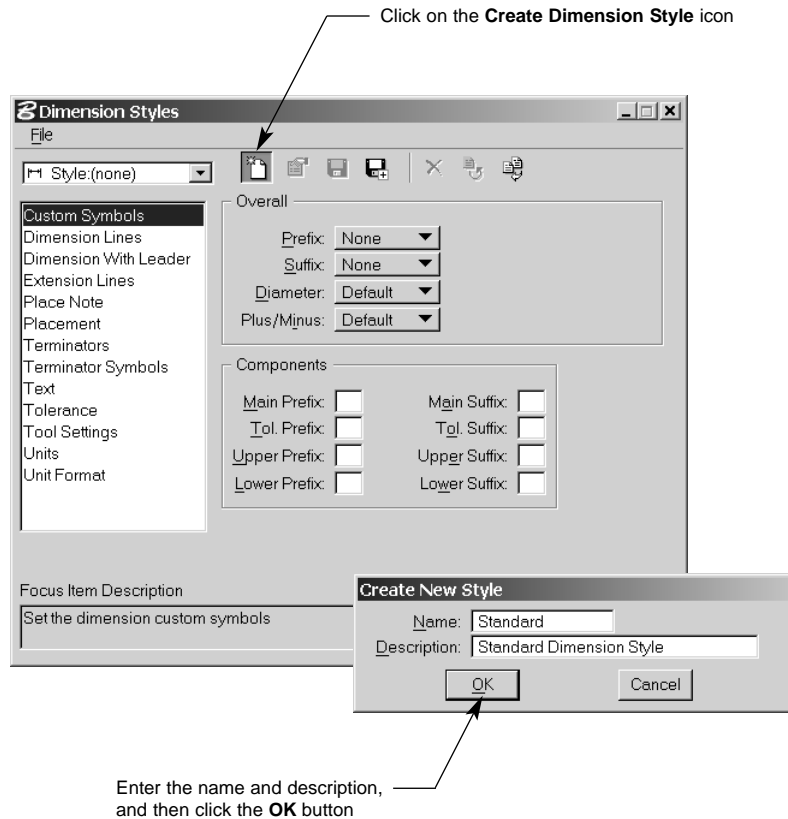
Synchronizes the dimension style with the attached DGN Library.

Creating Dimension Styles

To create a dimension style, click on the **Create Dimension Style** icon in the Dimension Styles dialog box or enter **dimstyle create** in the Key-in window. The Create New Style dialog box appears, where you can enter the name and description of the new dimension style.

After you create the dimension style, you can edit dimension parameters as desired. When you are finished editing dimension parameters, click on the **Save Style** icon to save the dimension style.

Figure 6
Creating a Dimension Style



To create a dimension style:

1. Open the Dimension Styles dialog box (**Element > Dimension Styles**).
2. Click on the **Create New Style** icon. The Create New Style dialog box appears.
3. Enter a name and description for the dimension style in the fields provided.
4. Click the **OK** button to create the new style.

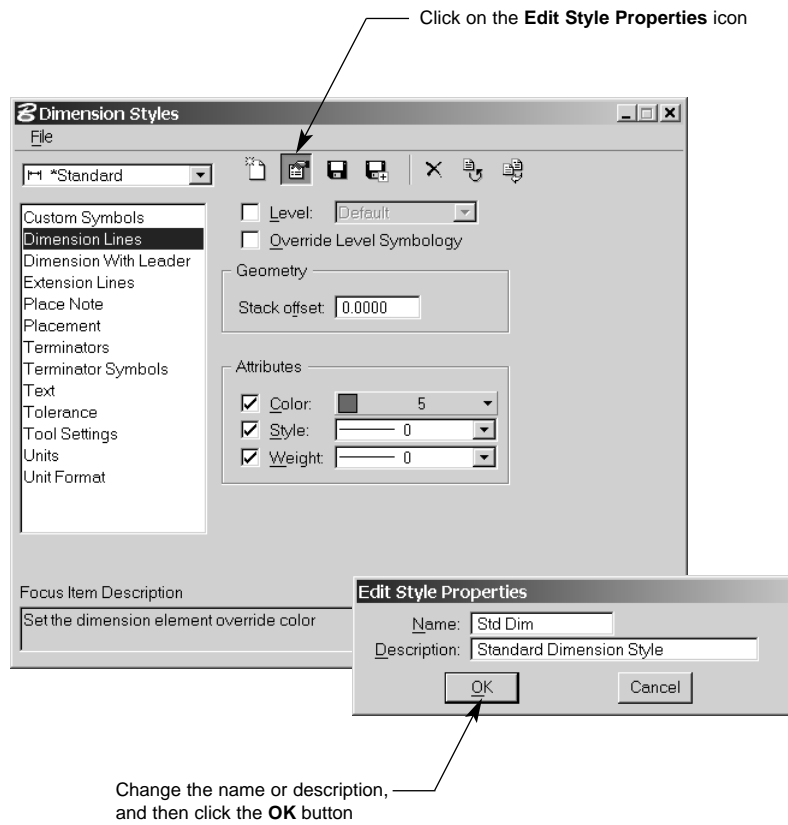
Why Use Text and Dimension Styles?

Editing Dimension Styles

To edit an existing dimension style, select the style in the Dimension Styles dialog box and edit the dimension settings as desired. If you wish to edit the name or description of the dimension style, click on the **Edit Style Properties** icon and edit the values in the Edit Style Properties dialog box that appears.

If the style has unsaved changes, an asterisk appears in front of the style name. Click on the **Save Style** icon to save the changes.

Figure 7
Editing a Dimension Style



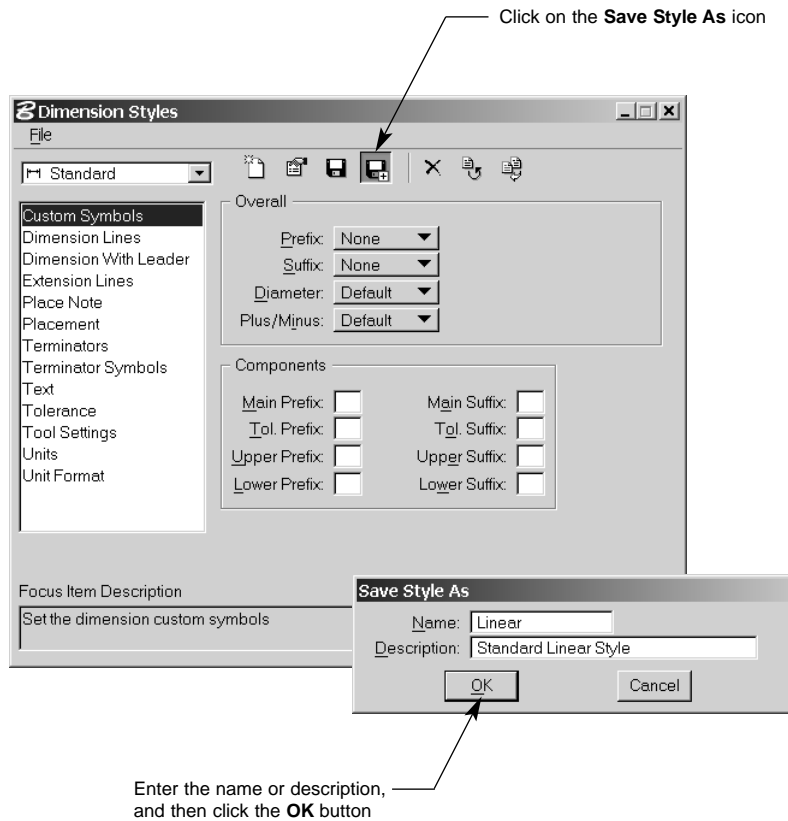
To edit a dimension style:

1. Open the Dimension Styles dialog box (**Element > Dimension Styles**).
2. Select the style you wish to edit.
3. Edit the dimension settings in the dialog box as desired.
4. If you wish to edit the style name and description, click on the **Edit Style Properties** icon and edit the values in the dialog box that appears.
5. Click on the **Save Style** icon to save your changes.

Saving a Dimension Style Under a Different Name

To copy a dimension style and save it under a different name, click on the **Save Style As** icon and enter the new name and description for the new dimension style in the Save Style As dialog box that appears.

Figure 8
Saving a Dimension Style Under a
Different Name



To save a dimension style under a different name:

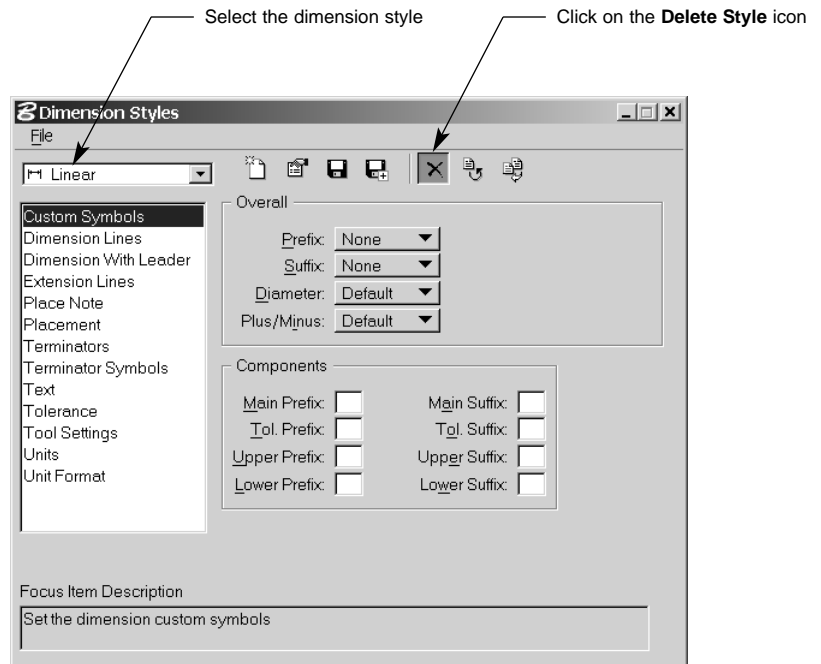
1. Open the Dimension Styles dialog box (**Element > Dimension Styles**).
2. Select the style you wish to copy.
3. Click the on **Save Style As** icon. The Save Style As dialog box appears.
4. Edit the name and description as desired in the fields provided.
5. Click the **OK** button to create the new style.

Why Use Text and Dimension Styles?

Deleting Dimension Styles

To delete a dimension style, select the style in the Dimension Styles dialog box and click on the **Delete Style** icon.

Figure 9
Deleting a Dimension Style



To delete a dimension style:

1. Open the Dimension Styles dialog box (**Element > Dimension Styles**).
2. Select the style you wish to delete.
3. Click on the **Delete Style** icon to delete the style.

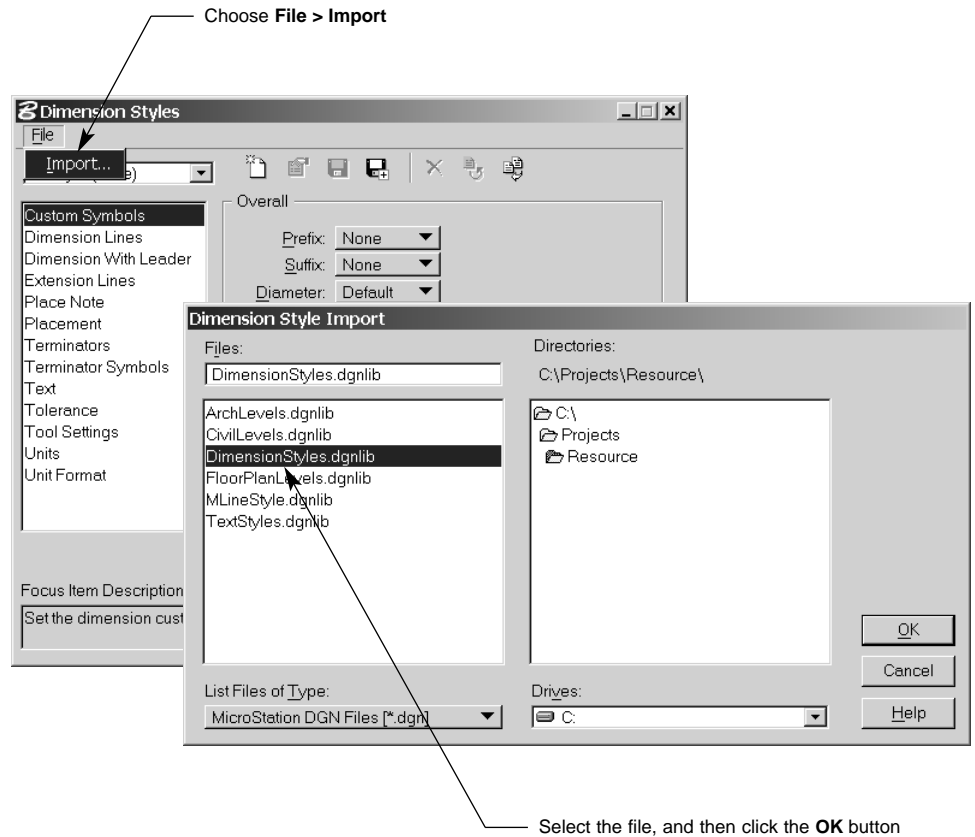
Why Use Text and Dimension Styles?

Importing Dimension Styles

Rather than create dimension styles from scratch, you can import existing dimension styles from other design files and DGN libraries. When you use this feature, all dimension styles in the source file are imported into the active design file.

To import dimension styles, choose **File > Import** from the menu bar in the Dimension Styles dialog box (**Element > Dimension Styles**). The Dimension Style Import dialog box appears, from which you can select the design file or DGN library that contains the dimension styles you wish to import.

Figure 10
Importing a Dimension Style



To import dimension styles:

1. Open the Dimension Styles dialog box (**Element > Dimension Styles**).
2. Choose **File > Import** from the menu bar in the dialog box. The Dimension Style Import dialog box appears.
3. Navigate to the storage directory of the source design file or DGN library that contains the dimension styles you wish to import.
4. Select the source file.
5. Click the **OK** button to import the dimension styles.

Why Use Text and Dimension Styles?

Import Versus Attach

When working with DGN Libraries, it is important to distinguish between import and attach. Import is to **copy** into - keeping it separate from the source. Attach is to **reference** in - keeping it linked to the source. If DGN Libraries are **attached**, they can be updated or synchronized with their source. Attached information is not actually in the design file until it is used.

There are three ways to make text, dimension, and multi-line styles available during a design session in MicroStation V8.

1. Create styles in your active design file.
2. Import styles into your active design file.
3. Attach styles via DGN and DGNLIB files defined by your workspace configuration. The variable used to specify which style and level libraries will be linked is **MS_DGNLIBLIST**. To detach these DGN Libraries, disable or remove the configuration variable.

There are four ways to make level libraries available during a design session in MicroStation V8.

1. Create levels in your active design file.
2. Import level libraries into your active design file.
3. Attach level libraries via CSV, DGN, DGNLIB, and DWG files defined by your workspace configuration. The variable **MS_DGNLIBLIST** is used to specify which style and level libraries will be linked. To detach these DGN Libraries, disable or remove the variable.
4. Manually attach level libraries into the design file. Choose **Levels > Library > Attach** from the Level Manager dialog box. Only level libraries that are manually attached can be manually detached.

Attaching DGN Libraries Automatically

You have just reviewed that a level library can be manually attached. All DGN Library types can also be attached automatically via the variable **MS_DGNLIBLIST**. Various DGN Libraries can be attached at various levels (Site, Project, User, etc.).

For example, assume you have DGN Libraries set up for multi-line, text and dimension styles for your company in a file called **XYZ-styles.dgnlib**. A client standard also dictates level settings in a DGN Library called **Client-levels.dgnlib**. Typically these should not be modified by users and therefore can be attached via a site configuration file (CFG) and project configuration file (PCF) respectively. In a text editor, you can edit these files to add the DGN Library configurations as shown below.

Site Configuration:

```
MS_DGNLIBLIST = $(_USTN_SITE)dgnlib/XYZ-styles.dgnlib
```

Project Configuration:

```
MS_DGNLIBLIST > $(_USTN_PROJECTDATA)dgnlib/Client-levels.dgnlib
```

DGNLIB Key-in Commands

The following key-in commands can be used to control the use of DGN Libraries. Enter these commands in the Key-in window or command prompt.

DGNLIB UPDATE ALL

Used to update all elements in the active design file that use attached DGNLIB files to define levels, dimension styles, or text styles.

DGNLIB UPDATE LEVELS [all | bylevelsymbology | custom | overridesymbology]

Used to update elements in the active design file that use attached DGNLIB files to define levels, based on the key-in command issued.

DGNLIB UPDATE DIMSTYLES

Used to update all elements in the active design file that use attached DGNLIB files to define dimension styles.

DGNLIB UPDATE TEXTSTYLES

Used to update all elements in the active design file that use attached DGNLIB files to define text styles.

DGNLIB UPDATE MLINESTYLES

Used to update all elements in the active design file that use attached DGNLIB files to define multi-line styles.