

FDOT2004 Sheet Navigator – Florida Local Users Group, Spring 2007

Instructor: Matt Sexton, FDOT-ECSSO, (850) 245-1600, matt.sexton@dot.state.fl.us

Purpose of Course: To provide users with a knowledge and basic grasp of the application and implementation of Sheet Navigator and its functions, including the new features of the MR3 release of Sheet Navigator.

FDOT2004 Sheet Navigator – Overview

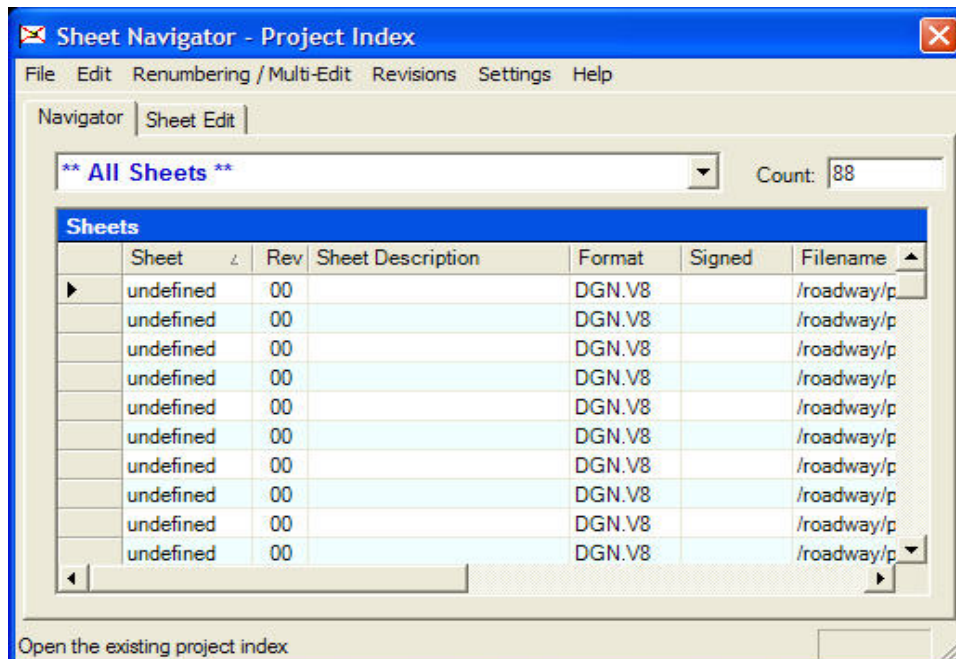
Sheet Navigator is an application developed by FDOT to fill in sheet title blocks and to retrieve the sheet title block information from previously created sheets. When Sheet Navigator is started interactively in MicroStation, it scans the active file for sheets, retrieves any sheet data that it finds and stores the data in GEOPAK adhoc tags on points at the corners of each sheet. The sheet information is later used to create an index of the project sheets and to automate batch plotting of the postscript sheet images for electronic delivery of the contract set of plans.

Sheet Navigator can be accessed from the FDOT2004 Sitemenu under *Utils>Label Sheets (SheetNavigator)*.

Prior to using any of the multiple sheet edit functions, the Project Index file (sheetinfo.xml) must be created by Sheet Navigator. It is automatically created in the root of the project folder. The file contains all of the information from the adhoc attribute tags in XML file. Simply select *File>New...* from the Sheet Navigator main menu.

FDOT2004 Sheet Navigator – Interface

The Sheet Navigator application consists of two tabs. The *Navigator* and *Sheet Edit* tabs. The *Multi-Sheet Edit* tab is now accessible as a dialog in the *Renumbering/Multi-Edit* mode.



Sheet Navigator

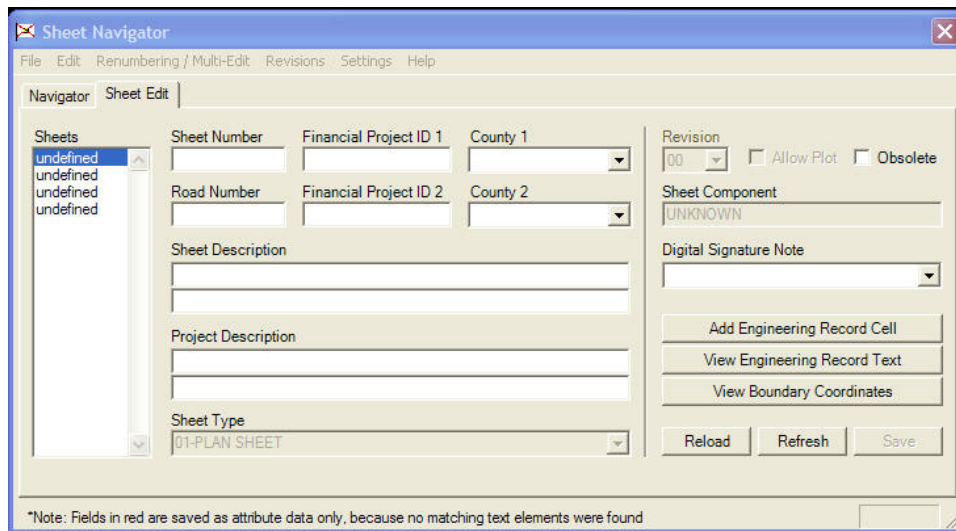
The *Navigator* tab in *Sheet Navigator* displays the list of sheets contained in the project index file (*SheetInfo.xml*). Design files containing the sheets can be opened by double-clicking on a particular sheet in the list. *Sheet Navigator* does not load or create a project index by default. A project index is required for certain operations such as renumbering, revisions, and multi sheet edit.

Open an Existing Project Index

An existing project index file (*SheetInfo.xml*) is opened by selecting **File>Open...** from the *Sheet Navigator* main menu. The default location for the project index file is the root project folder.

Create a New Project Index

A new project index file (*SheetInfo.xml*) is created by selecting **File>New...** from the *Sheet Navigator* main menu. All of the current project's folders will be scanned for sheet information and a new project index file will be created and then loaded.



Single Sheet Edit

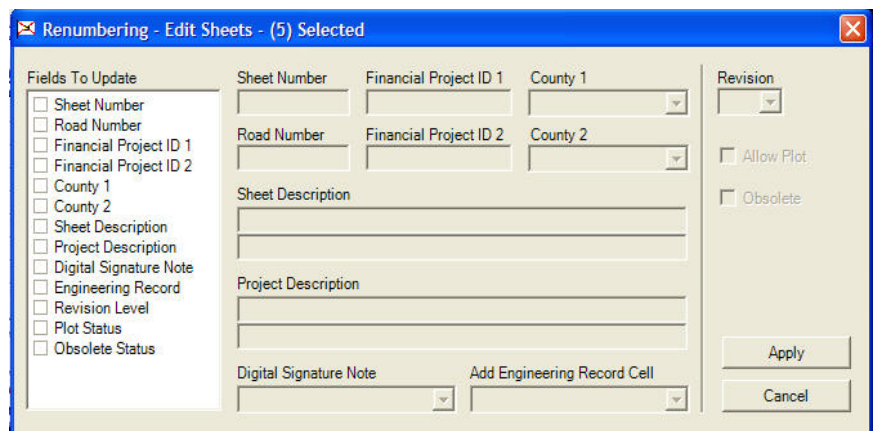
The *Sheet Edit* tab in *Sheet Navigator* displays the list of sheets contained in the current design file. Sheets are selected using the listbox containing the list of sheets. Each sheet can be modified by making changes and selecting the **Save** button. Changes are saved immediately to the design file and the project index file is NOT updated.

Save Changes

Any changes made to sheets using standard *MicroStation* tools or *Single Sheet Edit* do NOT update the project index file (*SheetInfo.xml*). The project index file must be regenerated (**File>New...**) in order to reflect the latest values for all sheets in the project.

Multi Sheet Edit

The *Multi Sheet Edit* dialog in *Sheet Navigator* provides the ability to apply changes to multiple sheets at once. A project index file (*SheetInfo.xml*) must be loaded and *Sheet Navigator* must be in renumbering/multi-edit mode (**Renumbering/Multi-Edit>Start process**). All changes are made in memory and are NOT applied to the sheets until the renumbering process is finished (**Renumbering/Multi-Edit> Finish & Apply Changes**).

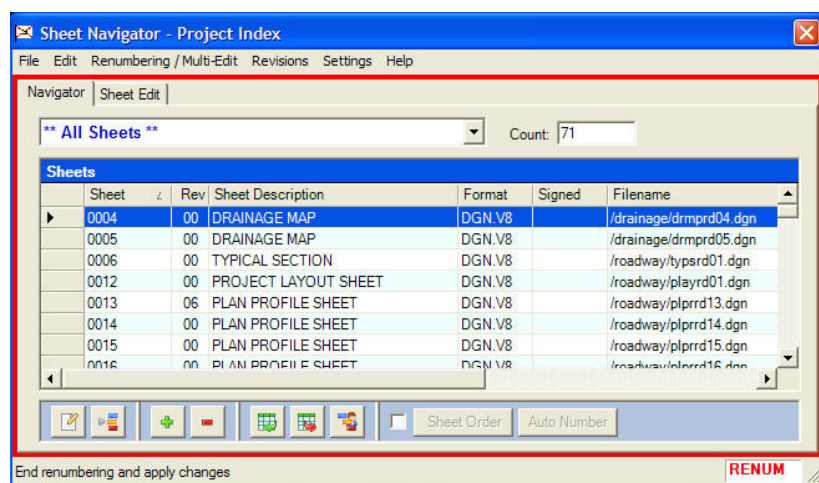


Select Sheets

Sheets are selected using the list of sheets in the *Navigator* tab. Multiple rows can be selected in sequence by dragging across the row selectors (gray area at the start of each row). Multiple rows can also be selected by using the SHIFT and CTRL keys. Use the SHIFT key to select a range of rows, and use the CTRL to select rows one at a time. After selecting the sheets, the *Multi-Sheet Edit* dialog can be accessed from the menu *Renumbering/Multi-Edit>Edit Sheet(s)* or by clicking on the *Edit Selected Sheets* button located at the bottom left of the Sheet Navigator dialog.

FDOT2004 Sheet Navigator - Offline Modes

The *Sheet Navigator* application has two offline modes: *Renumbering Mode* and *Revision Mode*. Both modes store changes in memory and then apply the changes in a batch process to all of the necessary design files.



Renumbering/Multi-Edit Mode

A project index file (*SheetInfo.xml*) must be loaded prior to entering renumbering/multi-edit mode. If the index has not been updated to contain the latest sheet information then it should be regenerated (*File>New...*) prior to entering renumbering mode, otherwise changes will most likely be lost. This is because the values stored in the loaded project index file will be used to save all sheet information back to the design files.

Enter Renumbering Mode

Open or create a project index file and then select *Renumbering/Multi-Edit>Start Process* from the Sheet Navigator main menu. Renumbering mode is indicated by the red border and the RENUM text in the lower-right of the status bar. The *Renumbering/Multi-Edit* menu options become available.

Add Sheet Placeholders

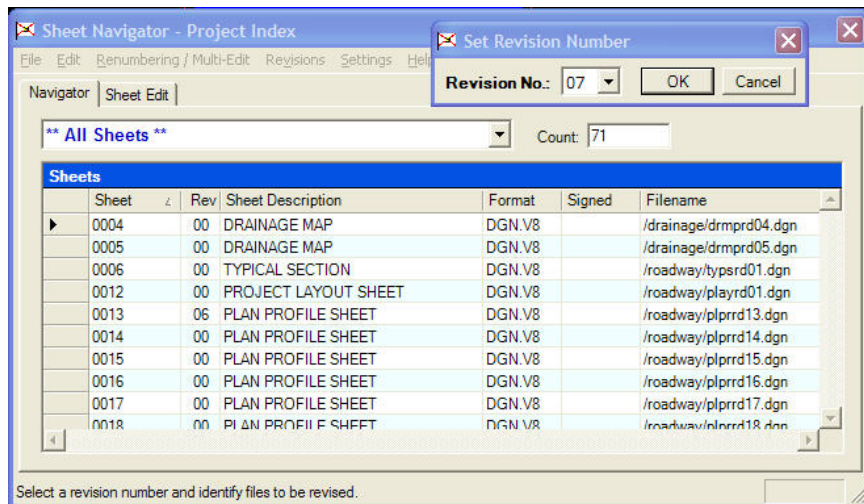
In the *Navigator* tab, highlight a sheet and select *Renumbering/Multi-Edit>Renumbering>Insert Sheet Placeholders* from the main menu. Then select an increment amount in the dialog that appears. The value entered will be added to the currently selected sheet and all subsequent sheets for sheets with the same prefix as the currently selected sheet. For example, to insert a gap of 3 sheets between sheets 3 and 4, select sheet number 4 and insert 3 placeholders. Sheet 4 becomes sheet 7, sheet 5 becomes sheet 8, and so on. This can also be accessed from the new buttons at the bottom of the Sheet Navigator dialog during the *Renumbering/Multi-Edit* process.

Remove Sheet Placeholders

In the *Navigator* tab, highlight a sheet and select *Renumbering/Multi-Edit>Renumbering>Remove Sheet Placeholders* from the main menu. All or specified gaps can be removed from sheets with the same prefix as the currently selected sheet. This can also be accessed from the new buttons at the bottom of the Sheet Navigator dialog during the *Renumbering/Multi-Edit* process.

Additional New Features

Additionally, you may also sequence the sheets, set the sheet order and also auto-number the sheets from both the menu and *Renumbering/Multi-Edit* dialog buttons.



Revision Mode

A project index file (*SheetInfo.xml*) must be loaded prior to entering revision mode. If the index has not been updated to contain the latest sheet information then it should be regenerated (*File>New...*) prior to entering revision mode, otherwise changes will most likely be lost. This is because the values stored in the loaded project index file will be used to save all sheet information back to the design files.

Enter Revision Mode

Open or create a project index file and then select **Revisions>Start Process** from the *Sheet Navigator* main menu. Revision mode is indicated by the red border and the RevXX text in the lower-right of the status bar, where XX is the current revision level. The *Revisions* menu options become available, and a new column appears in the *Navigator* datagrid which contains a checkbox used to select which sheets to revise.

If you need further assistance with Borehole Navigator or have questions that are not addressed in this handout, feel free to contact Matt Sexton at FDOT's Engineering/CADD Systems Office at (850) 245-1600 or email matt.sexton@dot.state.fl.us