



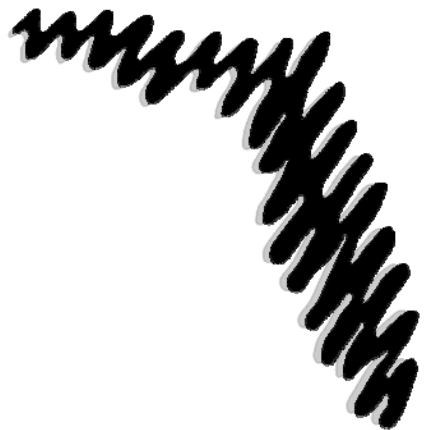
IT'S TIME FOR LEARNING.

FLUG  
Spring Conference 2008

## MicroStation XM Enhancements to Models

**Presenter:** Tom Stogdill, Senior MicroStation Product Consultant

Bentley Systems, Incorporated  
685 Stockton Drive  
Exton, PA 19341  
[www.bentley.com](http://www.bentley.com)



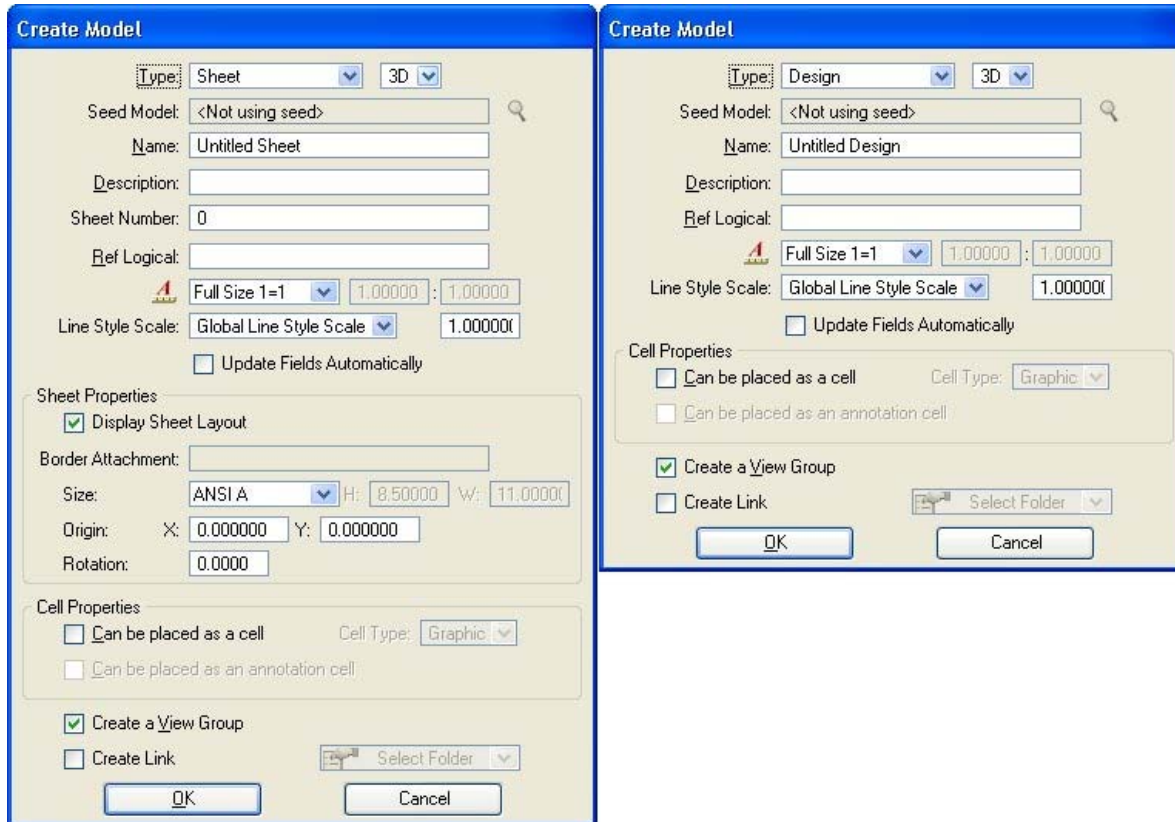
**F L U G**



## What's New?

### Models Enhancements

With the XM Edition you can create a [Project Explorer link](#) when you create a model in the Create Model dialog box. This edition also introduces the concept of a [model-specific line style scale](#). Additional enhancements to models are covered in the following subtopics.



Left: Create (sheet) Model dialog box. Right: Create (design) Model dialog box.

#### ☞ Associate border attachments with sheet models

When you [associate a border attachment to a sheet model](#), any changes to the annotation scale for the sheet, automatically are propagated to the border attachment. If, for example, you have an A4 title border associated to an A4 sheet model, and you change the annotation scale to 1:50, then the associated border file also is scaled by the same amount.

To associate a border attachment with a sheet model, use the SHEET SET BORDERATTACHMENT key-in.

#### ☞ Sheet Number property for sheet models

Sheet models have an adjustable Sheet Number property. This enhancement makes it easy to order sheet models for presentation, printing, cataloging in a [project](#), or generating [PDFs](#).

#### ☞ History navigation

During a MicroStation session you may activate many models, and those models may reside in multiple DGN files. To enable you to more easily navigate the current session's model history — that is, switch between models you have activated — regardless of the files in which those models reside, there are three icons added to the [View Groups window](#):



- The first two icons, Previous Model and Next Model, enable you to navigate backward and forward sequentially through the models you have activated.
- Clicking the downward-pointing arrow next to the third icon, All Models Visited, presents the entire model history, enabling you to reactivate any model you have visited during the current session.

modifiers to control the view configuration when the selected model is opened.



In the default MicroStation window layout, the View Groups window is open and docked to the bottom of the MicroStation window, just above the status bar.



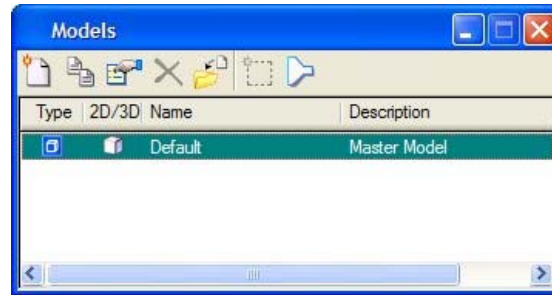
## What's New?

### Models Enhancements

Model management is improved in this SELECT update.

#### Filter capability in Models dialog box

You can filter the models list in the **Models dialog box** by Type, 2D/3D, Name, and/or Description. The filter icon lets you enable/disable a filter row at the top of the list box.



#### Cell, Cell Type, and Annotation model identification in Models dialog box

Columns are added to the list box in the **Models dialog box** to make it easy to identify models designated as cells and annotation cells and to determine the cell types of such models. The Cell Type and Is Annotation Cell columns are not displayed by default. To enable their display, right-click the list heading row and turn on Cell Type and Is Annotation Cell from the pop-up columns menu.