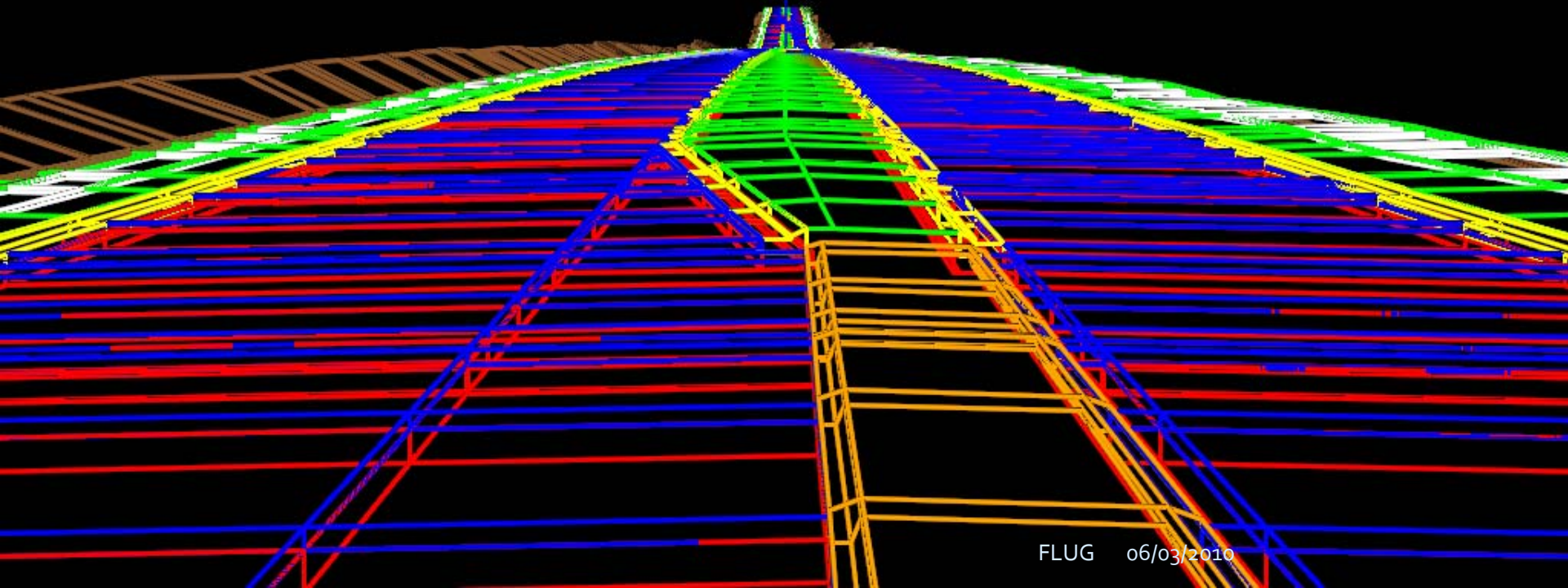


Corridor Modeler

An Urban Roadway Design Project Example

Presented By:

Vern E. Danforth P. E.,
Florida Department of Transportation
Engineering CADD Systems Office



What is Corridor Modeler?

*Its a
designers
toolkit!*

Template Library(s)

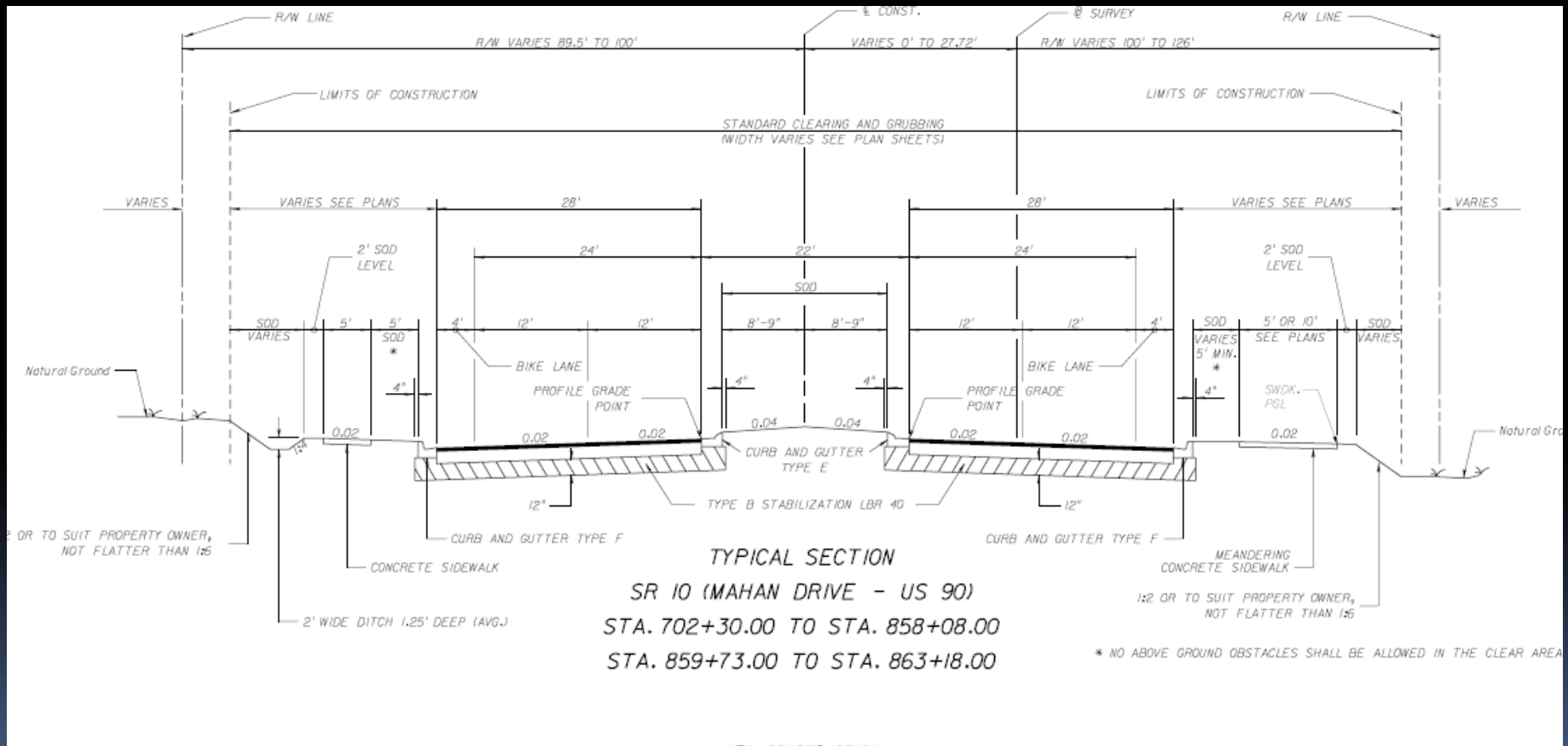
- Create/Edit Job Sections
- Retrieve Standards Components
- Retrieve Component Groups
- Retrieve Typical Sections
- Assign Rules and Parameters
- Geometry Constraints

Roadway Designer

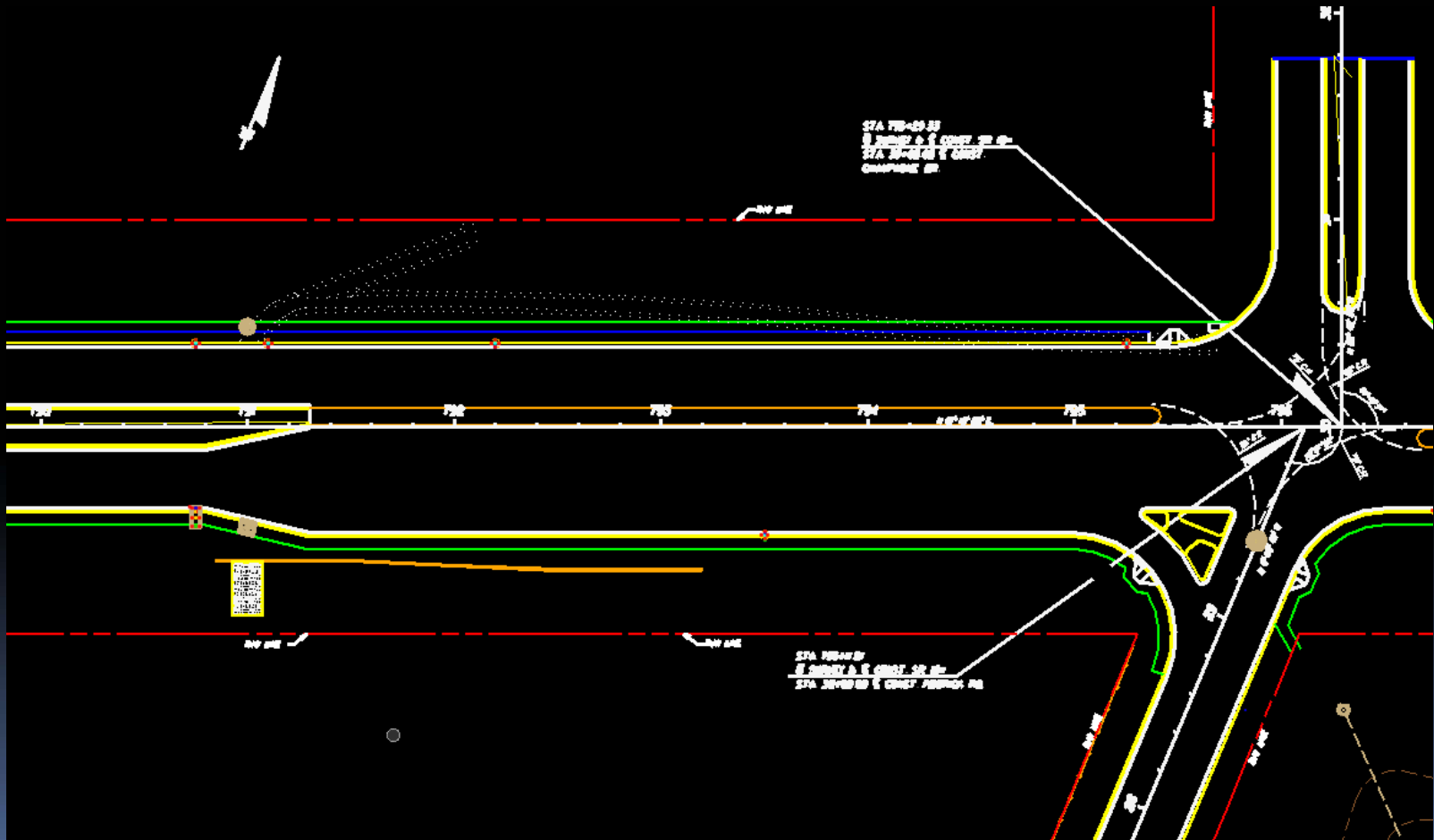
- Target Graphics Elements
- Template(s) Station Limits
- Point Controls
- Super-Elevation
- Milling/Overlay Criteria
- End Condition Exceptions
- Parametric Constraints



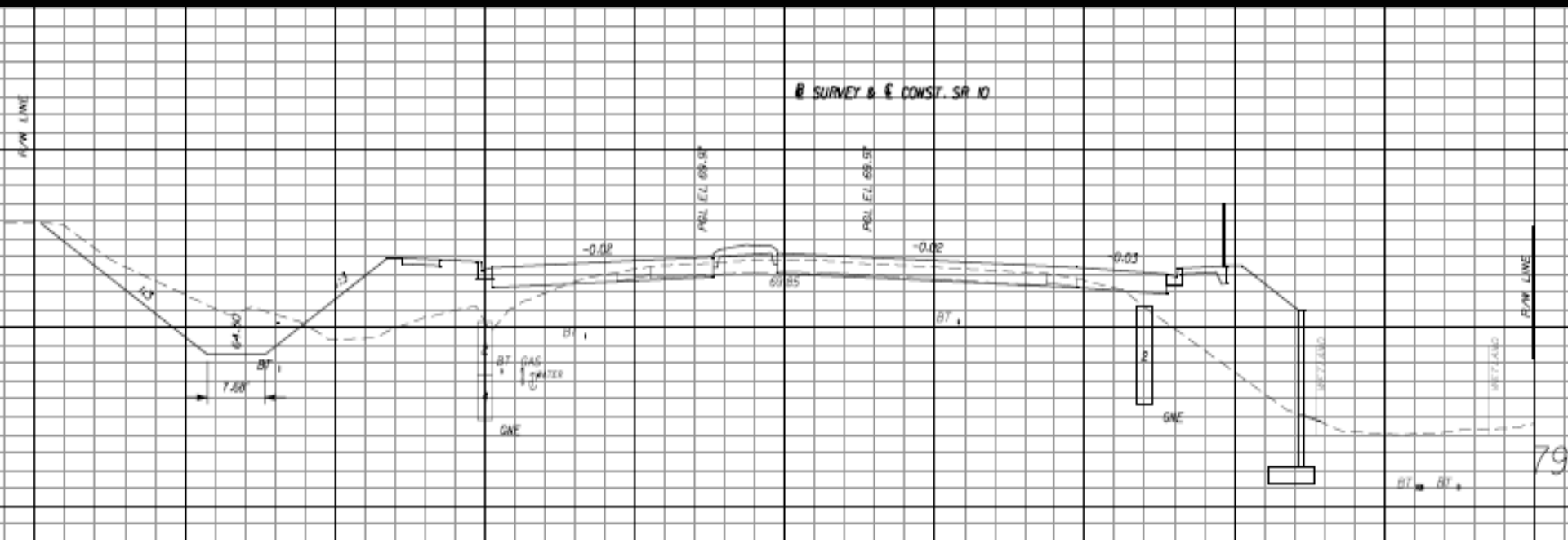
Example: Typical Section Exhibit



Example: Project Plan



Example: Project Cross Section



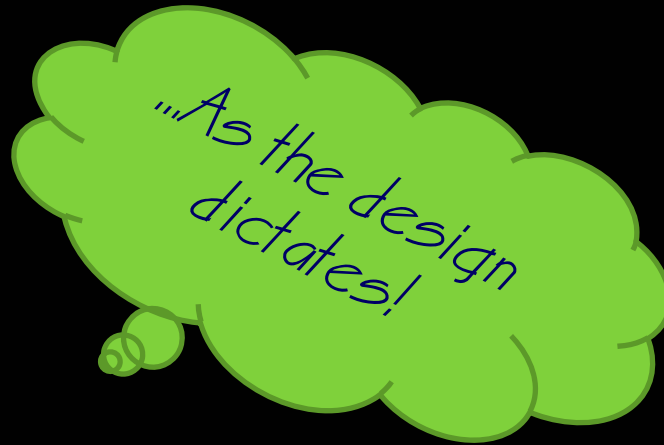
Demonstration: Applying “variations” to a Project Template

Project Template

- Median crossovers
- Left Turn lanes in the median
- Traffic Separators
- Meandering sidewalk
- Variable width sidewalk
- Hand Rails on sidewalk -720
- Gravity Walls -742
- Urban Driveway Locations -i

Project Roadway Designer

- Special Ditch Profile - 717
- Retaining Walls -722
- Intersections-dempsy



Demo...

Designing in 3D, WIIFM

*...What's in it
for me!*

DESIGN TIN OR DTM

- Surface Model Analysis Tools
 - contours, slope vectors, drainage
- R/W limit boundary or hull
- Wetland Impacts
- Re-Wall Limits
- Gravity Wall Location Needs

VISUALIZE

- 3D Perspectives of Roadway Design
 - walk the design
 - drive along
 - fly over
- Render
- Photo-match
- Animate

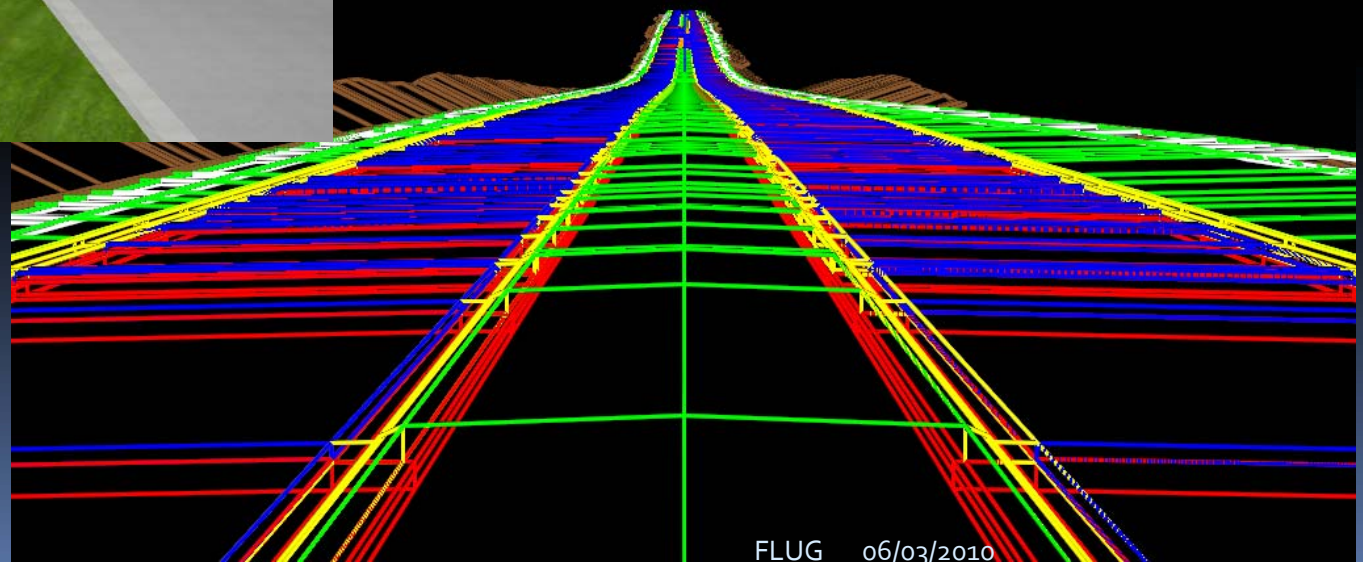
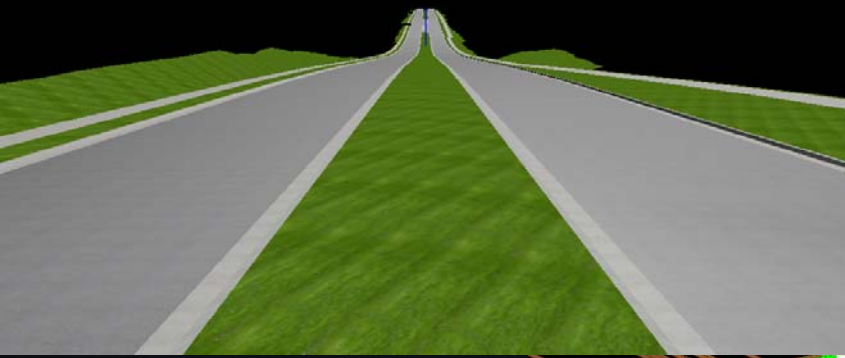
INTEGRATE other 3D MODELS

- Drainage
- Existing Utilities
- Proposed Utilities
- Structures/Bridges
- Google warehouse
- 3D Cells
- Etc.

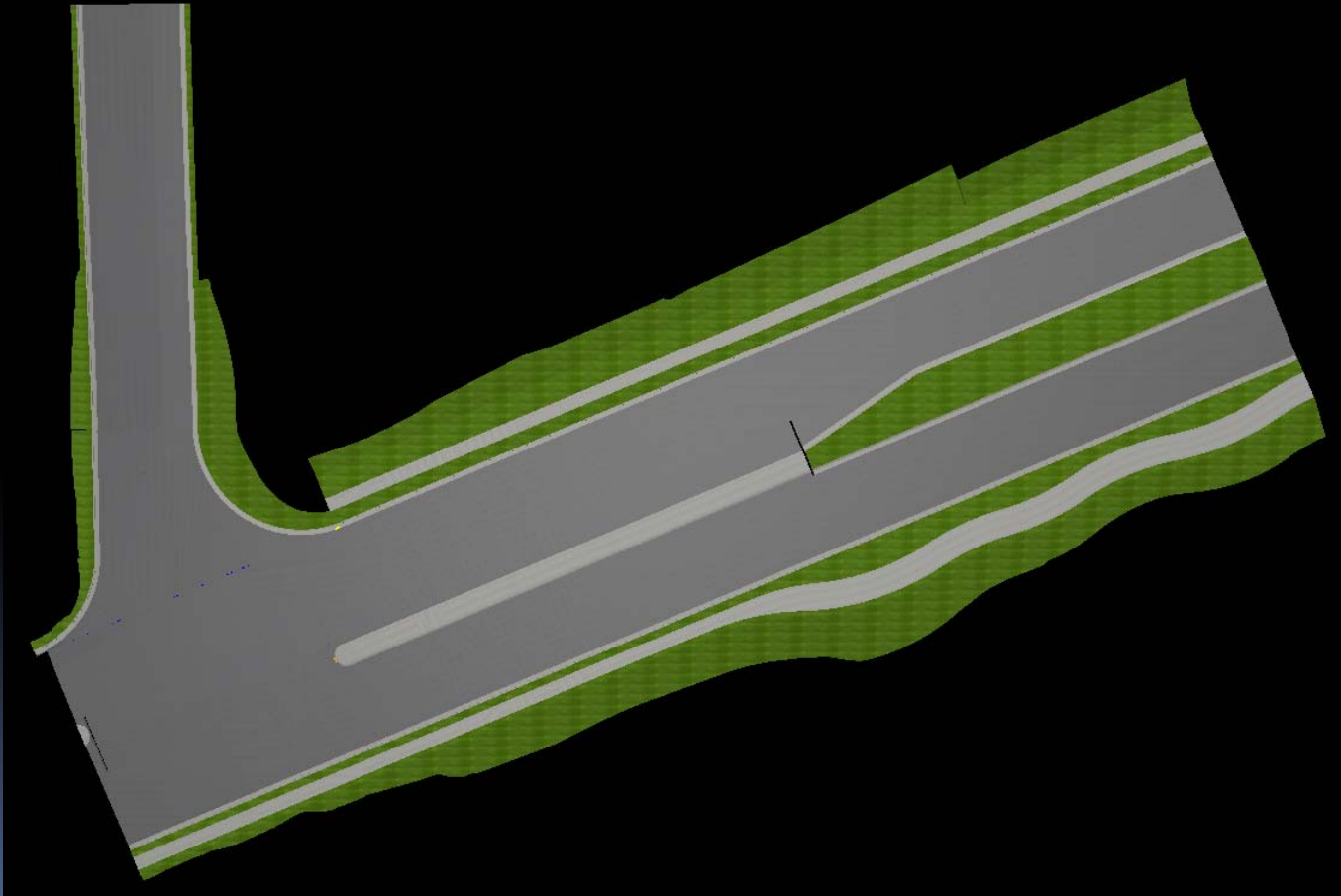
OUTPUT

- Automated Machine Guidance
- Land XML
- Cross Sections at any interval

Example: 3D Project Model



Example: Proposed Mesh Model/DTM



Demo...