

Major Changes in Printing

Jimmie Prow



What's New?

- Batch Print is gone!
 - Do I have your attention yet?
- Print Organizer replaces Batch Print.
- Print Styles
 - (similar to Batch Print Specifications)
- Single sheet printing supports Print Styles

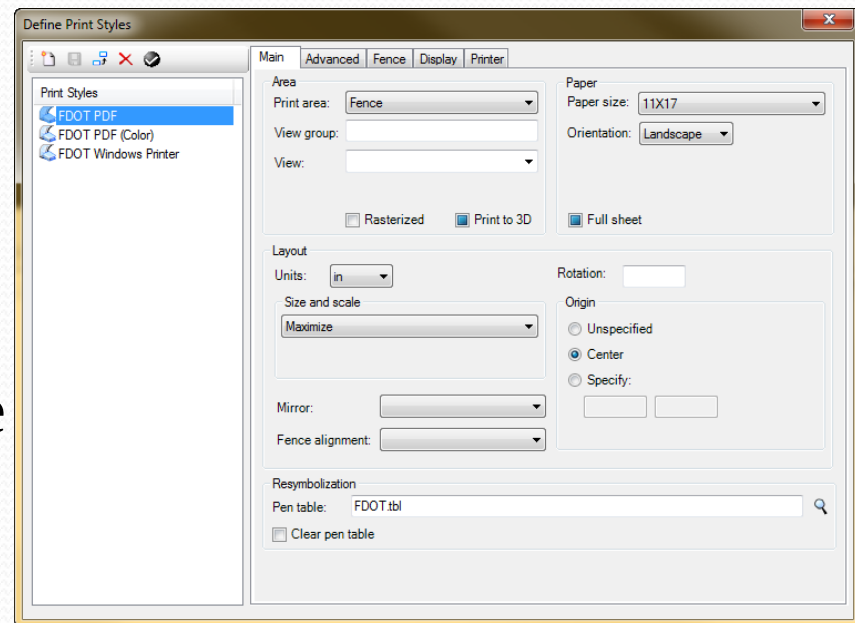


Print Styles

- Print Styles allow you to define and reuse named collections of print definition properties.
 - Paper Size
 - Pen Table
 - Plot Driver
 - Fence Definitions (plot border)
- They can be used in both Print Organizer and the Print dialog.

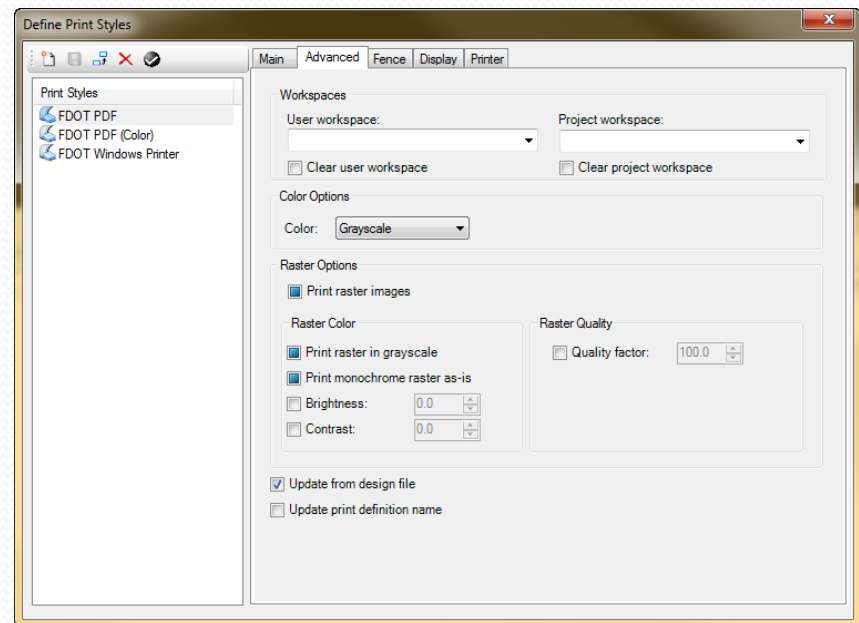
Print Styles - Main

- Print area should be Fence.
 - A fence will be created based on the Print Definition created on the Fence tab.
- Rasterized should be unchecked unless the style is intended to show Rasterized features like transparencies.



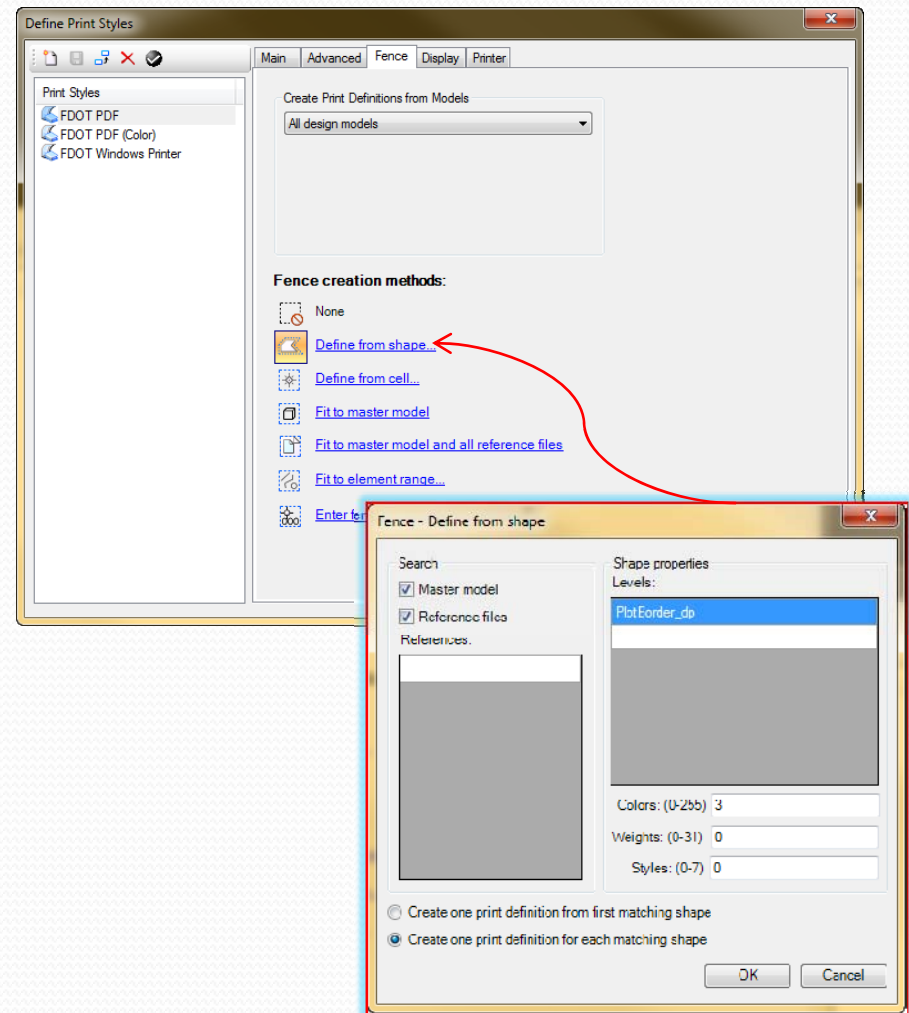
Print Styles - Advanced

- If workspaces are left blank, the current workspace in use will be used.



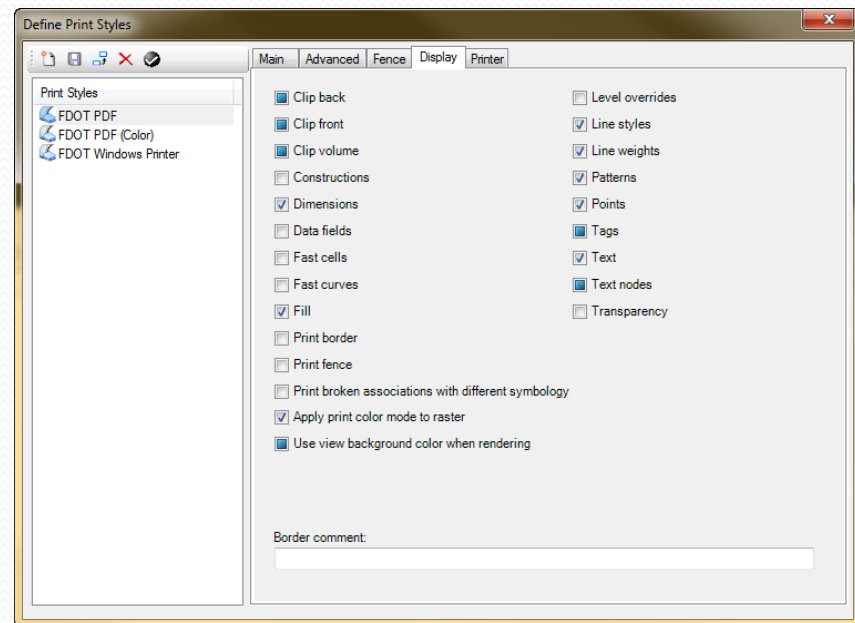
Print Styles - Fence

- *Create Plot Definitions from Models* should be set to “All design models.”
- Define as many search attributes as possible.
- These options will reduce the search time by filtering out elements.



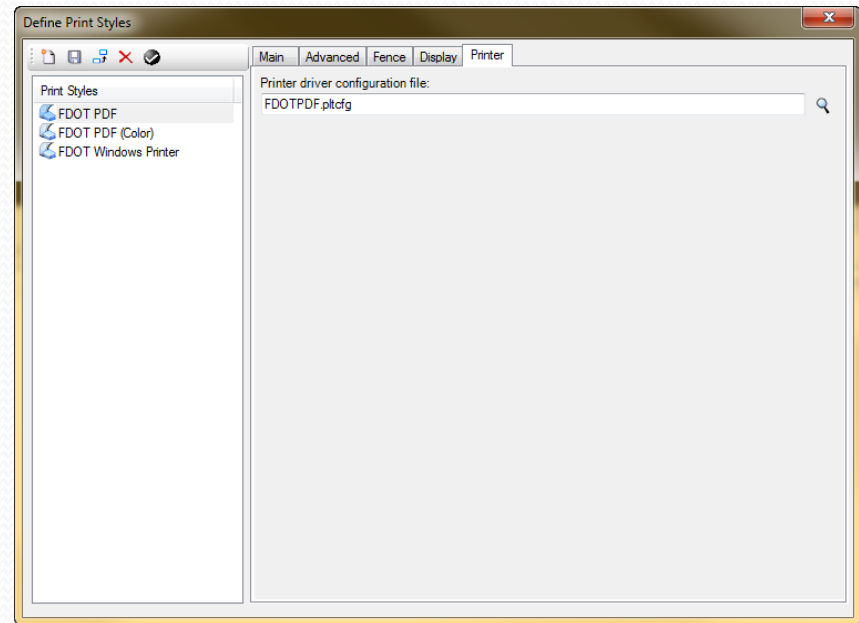
Print Styles - Display

- Define the display attributes to be used when creating prints.



Print Styles - Printer

- Select the Printer Configuration file to be used with this style.



Where are Print Styles Stored?

Print Styles are stored in DGN Library (DGNLIB) files.



In the FDOT workspace the default styles, are stored on the server in FDOT_PrintStyles.dgnlib.



Site specific Print Styles can be stored in a file named Custom_PrintStyles.dgnlib in the FDOT2010\RESOURCES\Dgnlibs directory on the server.



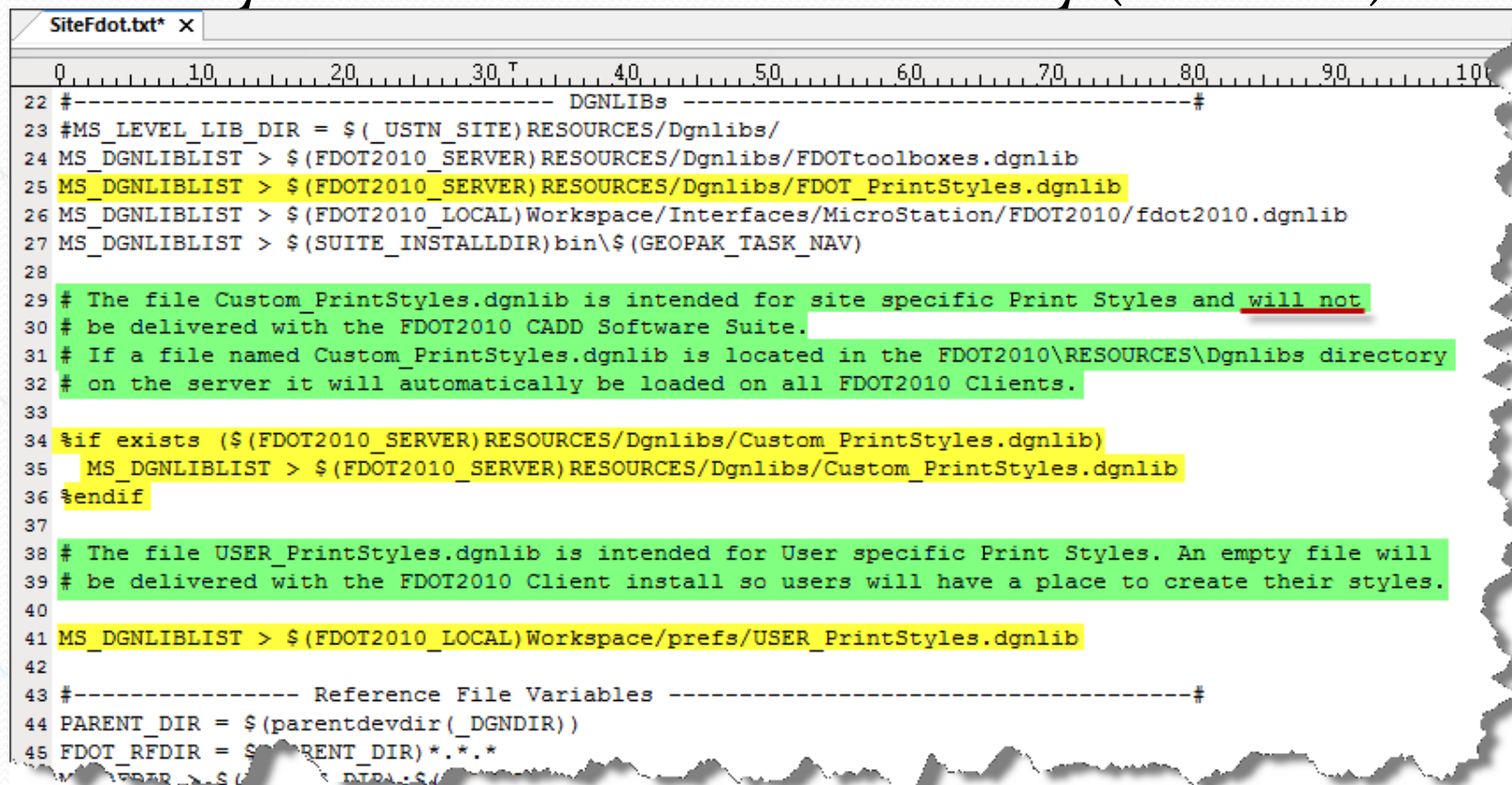
User specific Print Styles can be stored in a file named USER_PrintStyles.dgnlib in the local \FDOT2010\Workspace/prefs/ directory.



Project specific Print Styles can be stored in the symb directory.

Where are Print Styles Stored?

Print Styles are stored in DGN Library (DGNLIB) files.



```
SiteFdot.txt x
0 10 20 30 40 50 60 70 80 90 100
22 #----- DGNLIBs -----#
23 #MS_LEVEL_LIB_DIR = $_(USTN_SITE)RESOURCES/Dgnlibs/
24 MS_DGNLIBLIST > $(FDOT2010_SERVER)RESOURCES/Dgnlibs/FDOTtoolboxes.dgnlib
25 MS_DGNLIBLIST > $(FDOT2010_SERVER)RESOURCES/Dgnlibs/FDOT_PrintStyles.dgnlib
26 MS_DGNLIBLIST > $(FDOT2010_LOCAL)Workspace/Interfaces/MicroStation/FDOT2010/fdot2010.dgnlib
27 MS_DGNLIBLIST > $(SUITE_INSTALLDIR)bin\$(GEOPAK_TASK_NAV)
28
29 # The file Custom_PrintStyles.dgnlib is intended for site specific Print Styles and will not
30 # be delivered with the FDOT2010 CADD Software Suite.
31 # If a file named Custom_PrintStyles.dgnlib is located in the FDOT2010\RESOURCES\Dgnlibs directory
32 # on the server it will automatically be loaded on all FDOT2010 Clients.
33
34 %if exists ($(FDOT2010_SERVER)RESOURCES/Dgnlibs/Custom_PrintStyles.dgnlib)
35 MS_DGNLIBLIST > $(FDOT2010_SERVER)RESOURCES/Dgnlibs/Custom_PrintStyles.dgnlib
36 %endif
37
38 # The file USER_PrintStyles.dgnlib is intended for User specific Print Styles. An empty file will
39 # be delivered with the FDOT2010 Client install so users will have a place to create their styles.
40
41 MS_DGNLIBLIST > $(FDOT2010_LOCAL)Workspace/prefs/USER_PrintStyles.dgnlib
42
43 #----- Reference File Variables -----#
44 PARENT_DIR = $(parentdevdir(_DGNDIR))
45 FDOT_RFDIR = $(PARENT_DIR)*.*.*
46 PREFER > $(PARENT_DIR)*.*.*
```



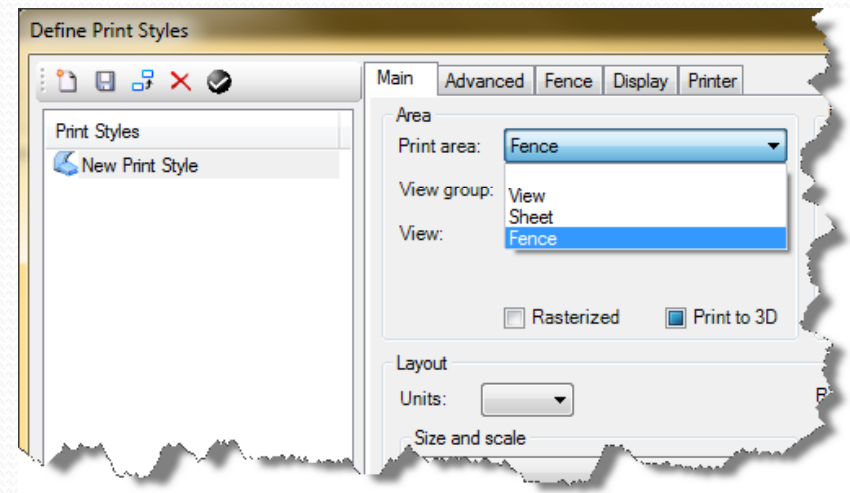
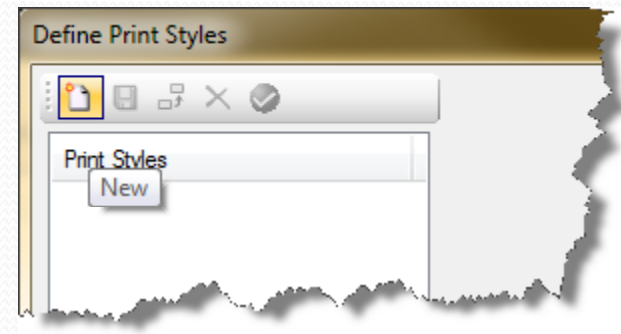
Define a New Print Style

- Open the file named USER_PrintStyles.dgnlib in the local \FDOT2010\Workspace/prefs/ directory.
- Open Print Organizer. ([File > Print Organizer](#))
- From Print Organizer select “Tools > Define Print Styles...”

Define Print Styles

- Click the New button
- Set the appropriate properties on each tab.
- Rename the Print Style and Save.

NOTE: Each Print Style must be saved individually.



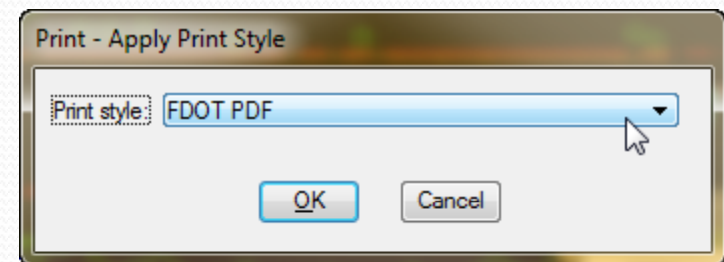
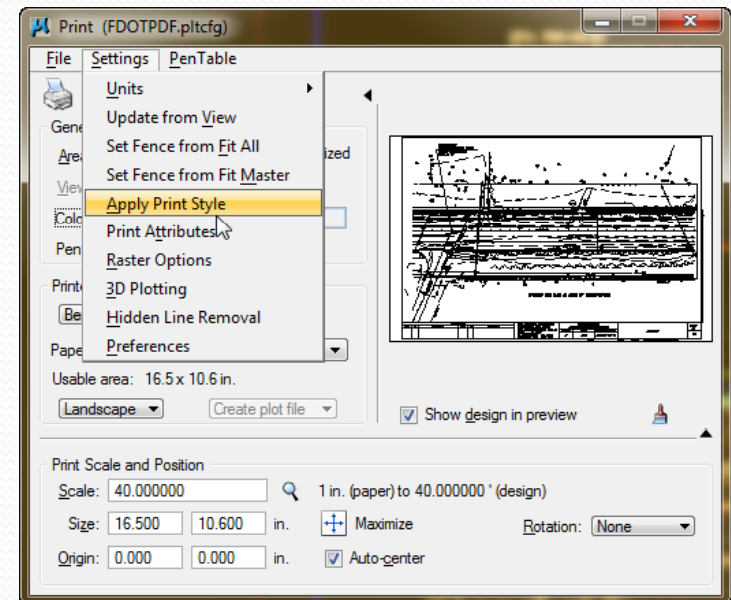


Using Print Styles in Print Dialog

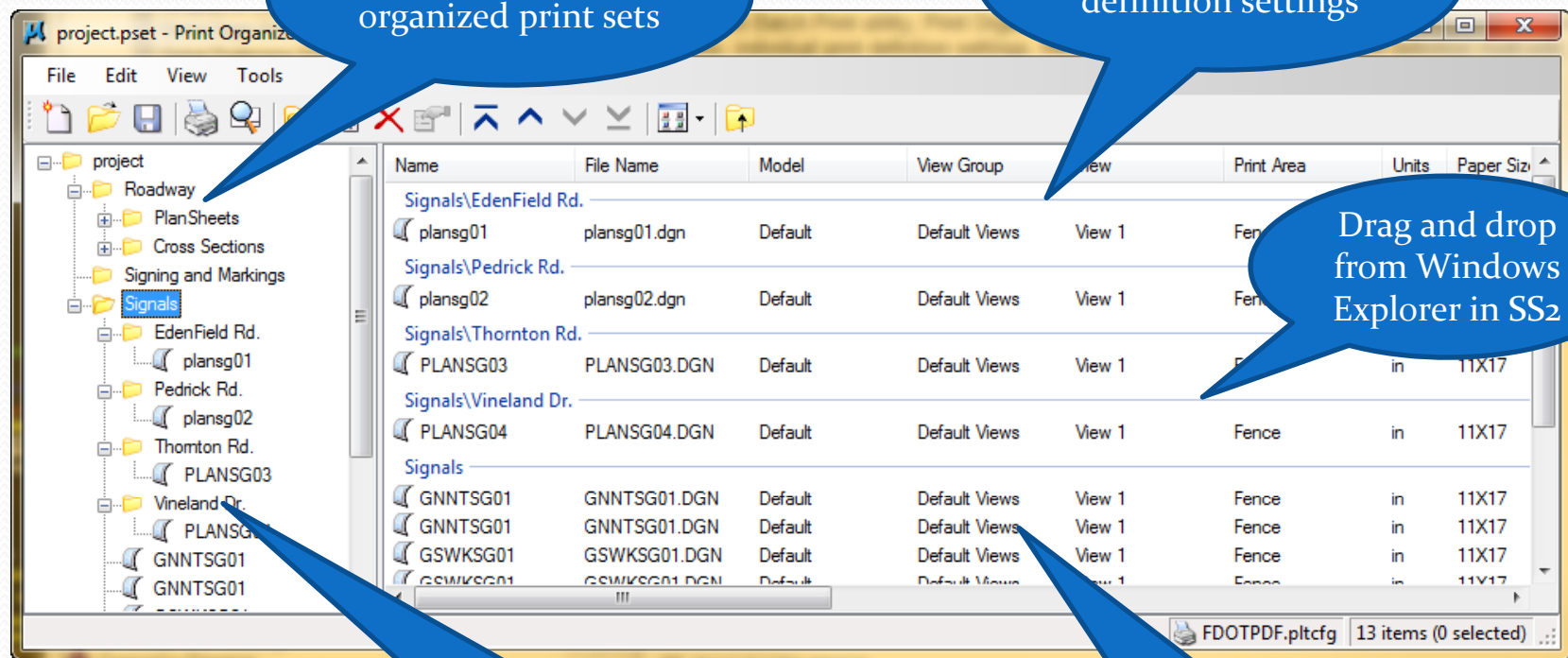
- There are many benefits to using Print Styles in the single sheet Print dialog.
 - No need to place a fence.
 - No need to select a plot driver.
 - No need to select a pen tables.
 - No need to adjust display settings.
- Once a Style has been applied you can override settings if needed.

Applying a Print Style

- To apply a Print Style select Settings > Apply Print Style from the Print dialog.
- You will be prompted to select a Print Style from a drop down list of available styles.



Print Organizer



Hierarchical organized print sets

Individual print definition settings

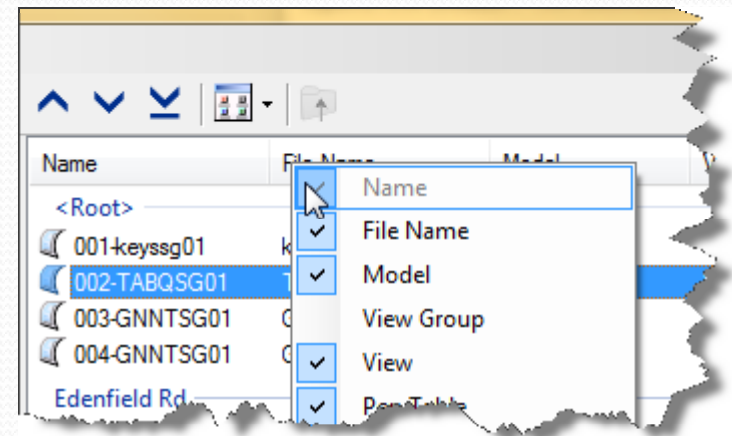
Drag and drop from Windows Explorer in SS2

PDF output that preserves the hierarchy defined in the print set

Print definition multi-edit, in-place editing

Print Organizer Interface

- The Print organizer interface can be arranged to easily view the information you are most interested in.
 - Right-Click on column header to turn columns on or off
 - Drag columns to change order



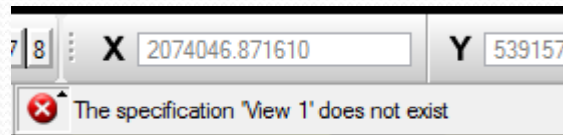


Print Organizer Tips

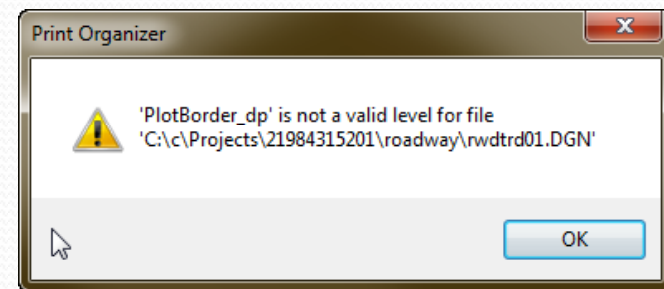
- Open a file you are not going to print before executing the print job.
- Keep an eye on the Message Center. It will notify you of any problems that occur.
- PDF files created with the Rasterized option turned on will not have searchable text.

Importing Old .JOB Files

- Print Organizer can open your old .JOB files.
 - When opened a conversion will take place.
 - The old Batch Print Specification file must be available.



- You may receive warning prompts indicating the plot border level is not in the references.





- Once converted you can organize as desired and save as a .PSET.



Creating a New Print Set File (.pset)

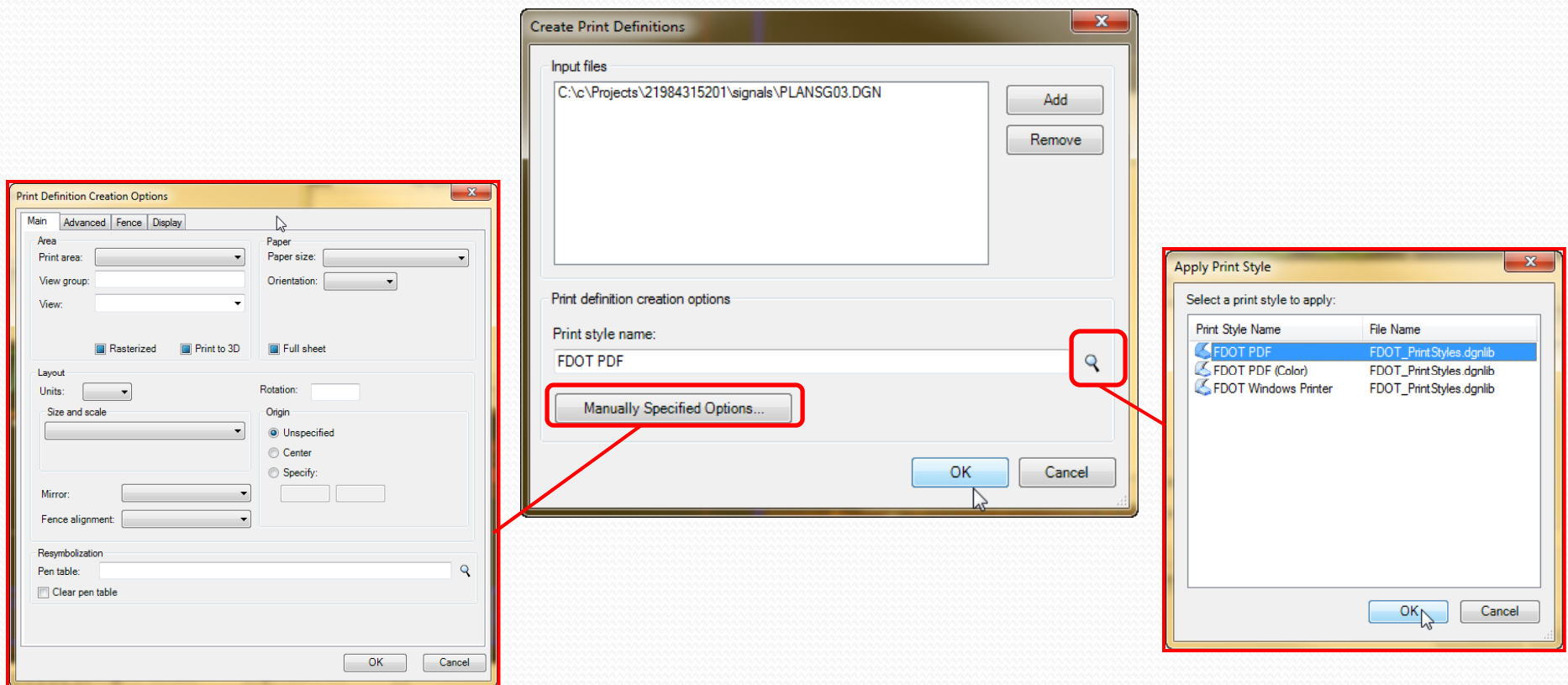
- Open a design file and then select File > Print Organizer from the MicroStation menu.
- In Print Organizer select File > Save As and define the name and location to store the .pset file before clicking the Save button.

Adding Folders and Files

- You can add folders to your pset for organization by:
 - Select File > Add Folder to Set from menu
 - Click on Add Folder to Set icon 
 - Right-click parent folder and select Add Folder to Set
- Files can be added at any level in the hierarchy by:
 - Select File > Add Files to Set from menu
 - Click on Add Files to Set icon 
 - Right-click parent folder and select Add Folder to Set
 - Drag and Drop from Windows Explorer (in [Select Series 2](#))

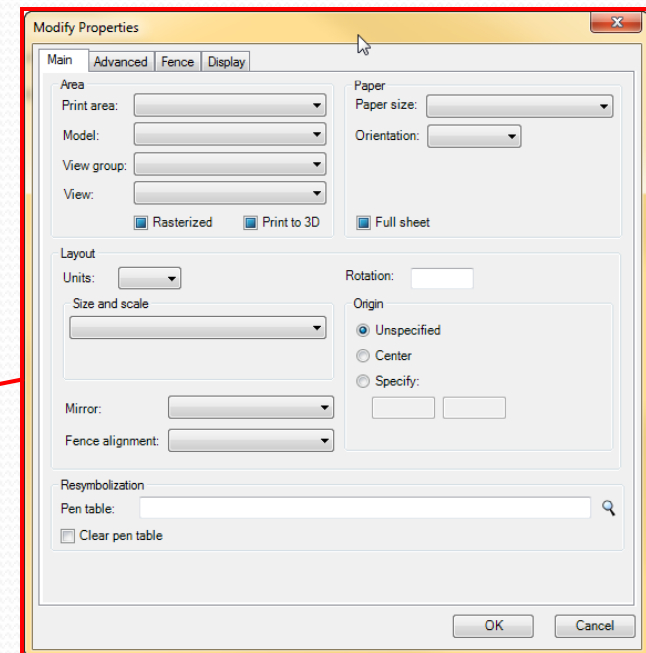
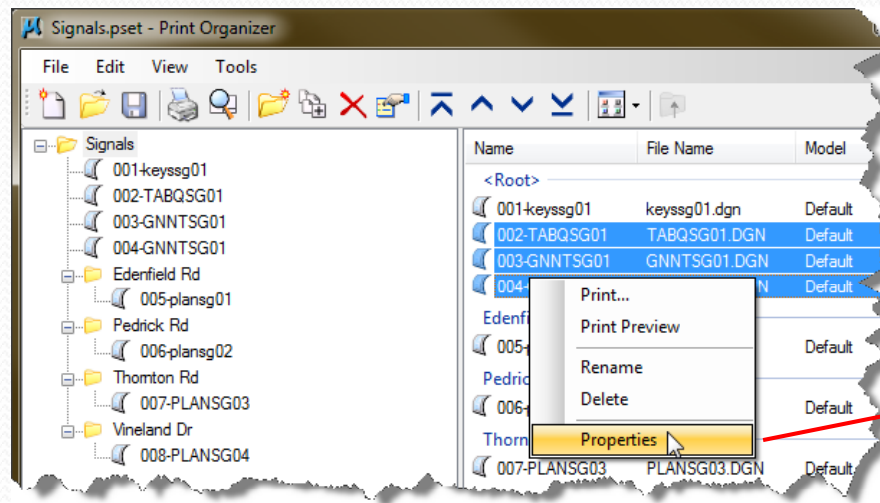
Applying Styles

- When adding files you are given the opportunity to apply a Print Style or to manually define options.



Editing a Print Definition

- Print Definitions can be modified at any time for a single sheet or a selection of sheets.
 - Right-click on selected sheets and select Properties.



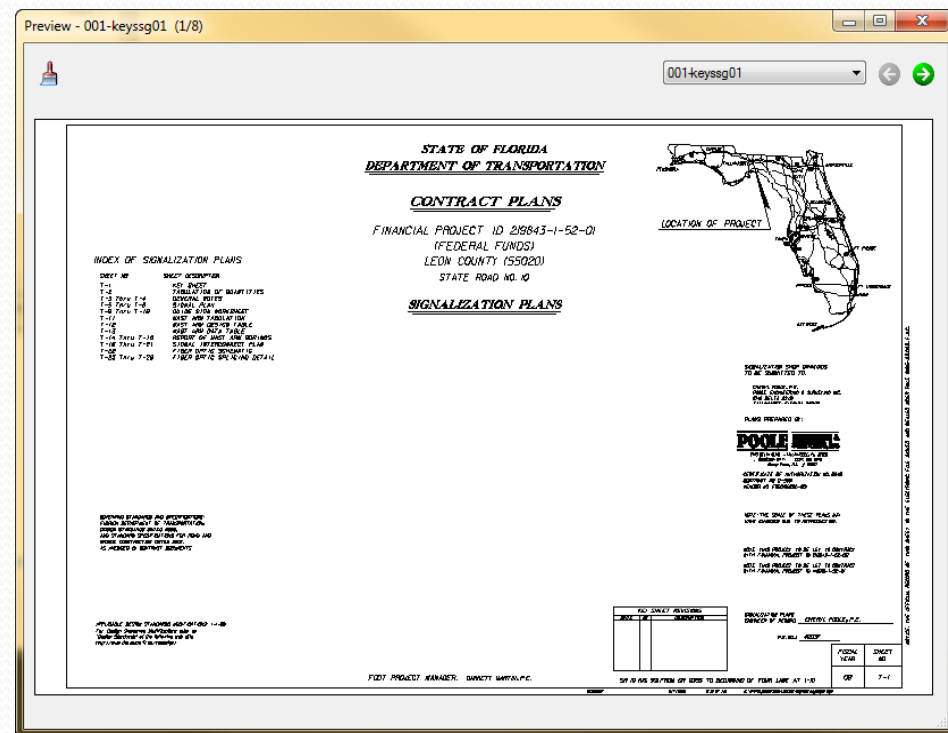
Print Preview

- A Print Preview can be generated of a file, selection of files, or entire folder of files.

- File > Print Preview

- Print Preview Icon

- Right Click > Print Preview





Questions?

Jimmie Prow

jimmie.prow@dot.state.fl.us

850-245-1626

ecso.support@dot.state.fl.us

850-245-1600