

FDOT Structures Plans Production Using FDOT2010 and MicroStation V8i

Mike Robertson
CADD Applications Developer
FDOT Engineering CADD Systems Office

For Structures Support contact:
Mike Baxley
mike.baxley@dot.state.fl.us

- **Agenda**

- What's new in FDOT2010 Software
- Handling Developmental Standards
- SuperSection Program

Structures Plans Production

- FDOT 2010 Release Date: Fall 2010?
- What version of MicroStation will FDOT2010 use?
MicroStation V8i (Select Series 2)

Structures Plans Production

- What's New?
- Single workspace FDOT2010, no legacy workspaces provided.
- **FONTS!**

Structures Plans Production

- FDOT will use True Type Fonts (TTF) instead of MicroStation Resource (RSC) fonts.
- Why the font change?
 - Solves problems with file translations between DGN/DWG
 - Non-Existent Support for modifying RSC based fonts
 - Non-Existent Support for modifying SHX based fonts
 - Experienced FDOT staff to maintain RSC and SHX fonts (lacking)
 - Much easier to maintain TTF fonts
 - Allowed all FDOT disciplines to standardize on same fonts
 - Expanded characters set for additional characters

Structures Plans Production

- Is Mixing Fonts in a Production Sheet Allowed?
 - Yes
- Should I convert existing text to the new font?
 - Due to character mapping changes and stacked fraction behavior it is not recommended to convert existing annotation.
- Does the font look different?
 - You decide.

Structures Resources

- Survey

PLAN DIMENSIONS:

All dimensions in these plans are measured in feet either horizontally or vertically unless otherwise noted.

DIMENSION VERIFICATION:

The dimensions, elevations and intersection angles shown are based on information as detailed in the Original Construction Plans of the existing bridges (unless noted otherwise), and may not represent the as-built conditions. It is the Contractor's responsibility to verify this data before beginning construction.

Structures Resources

- Survey

COATINGS:

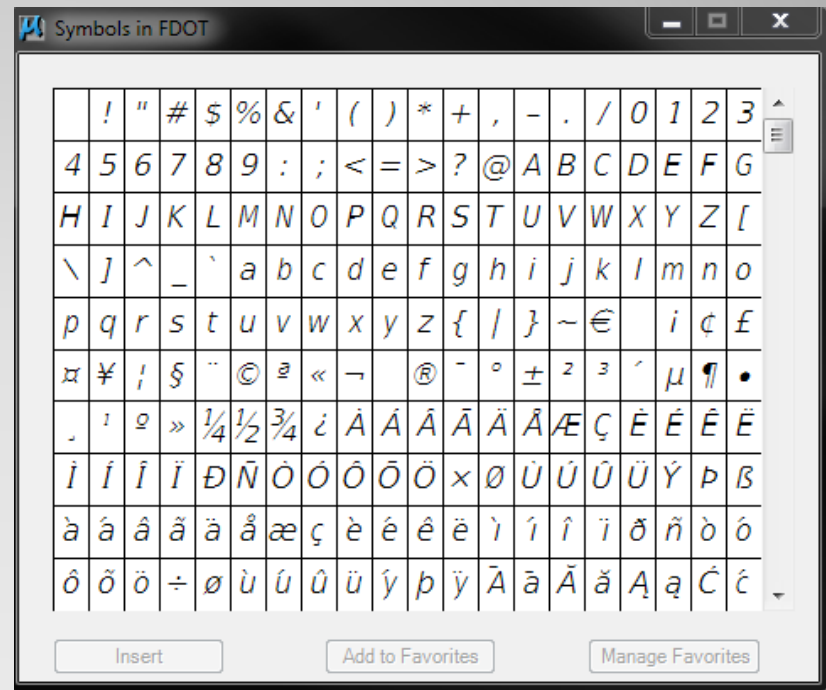
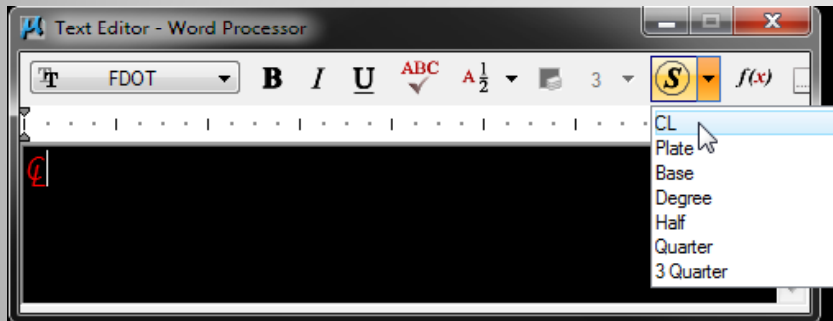
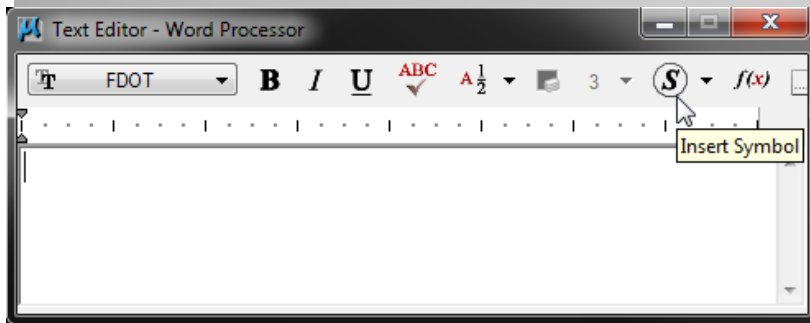
Hot dip galvanize all Nuts, Bolts, Washers, Guardrail Post Assemblies, Guardrail, Structural Tubes and Sleeve Members in accordance with the Specifications. Hot dip galvanize Guardrail Post Assemblies after fabrication.

ADHESIVE-BONDING MATERIAL SYSTEMS:

Provide and install Adhesive Bonding material Systems for Anchor Bolts and Dowels in accordance with Specification Sections 416 and 937.

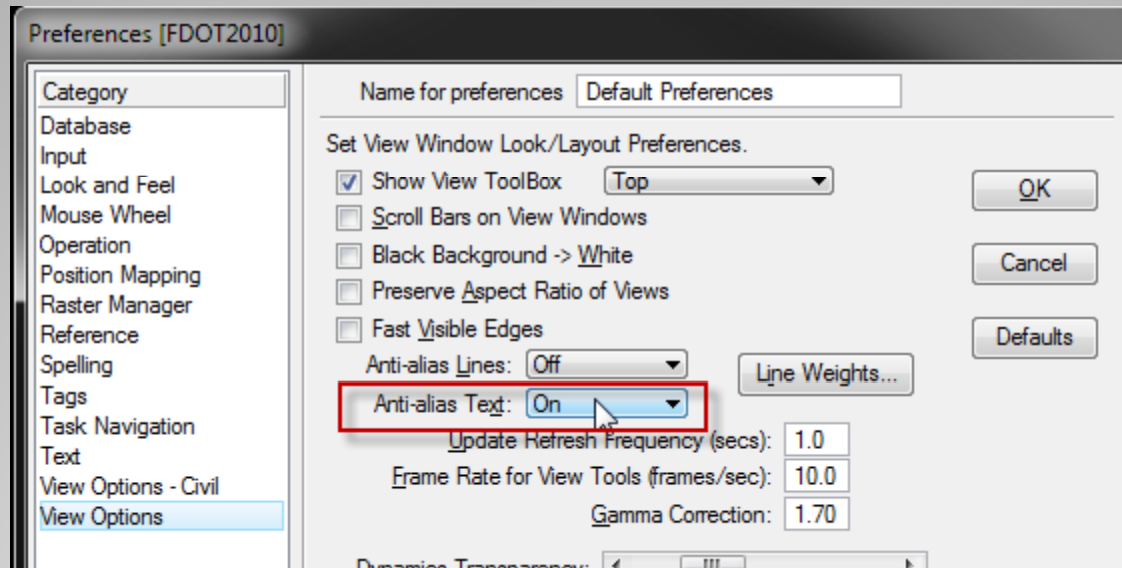
Structures Resources

- Almost all special character mappings change to Unicode standard positions



Structures Resources

- User Preference That Affects Text Display



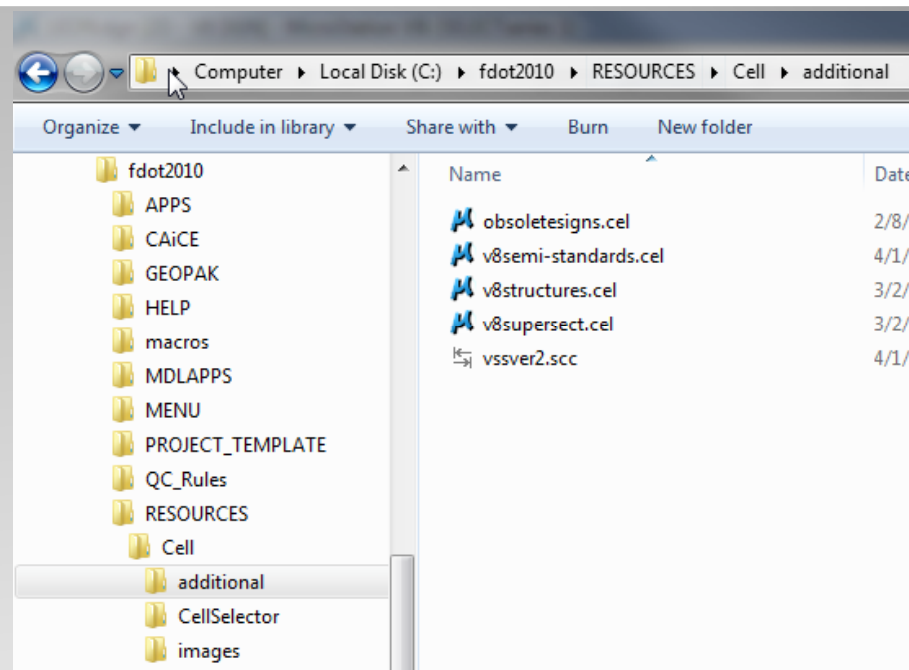
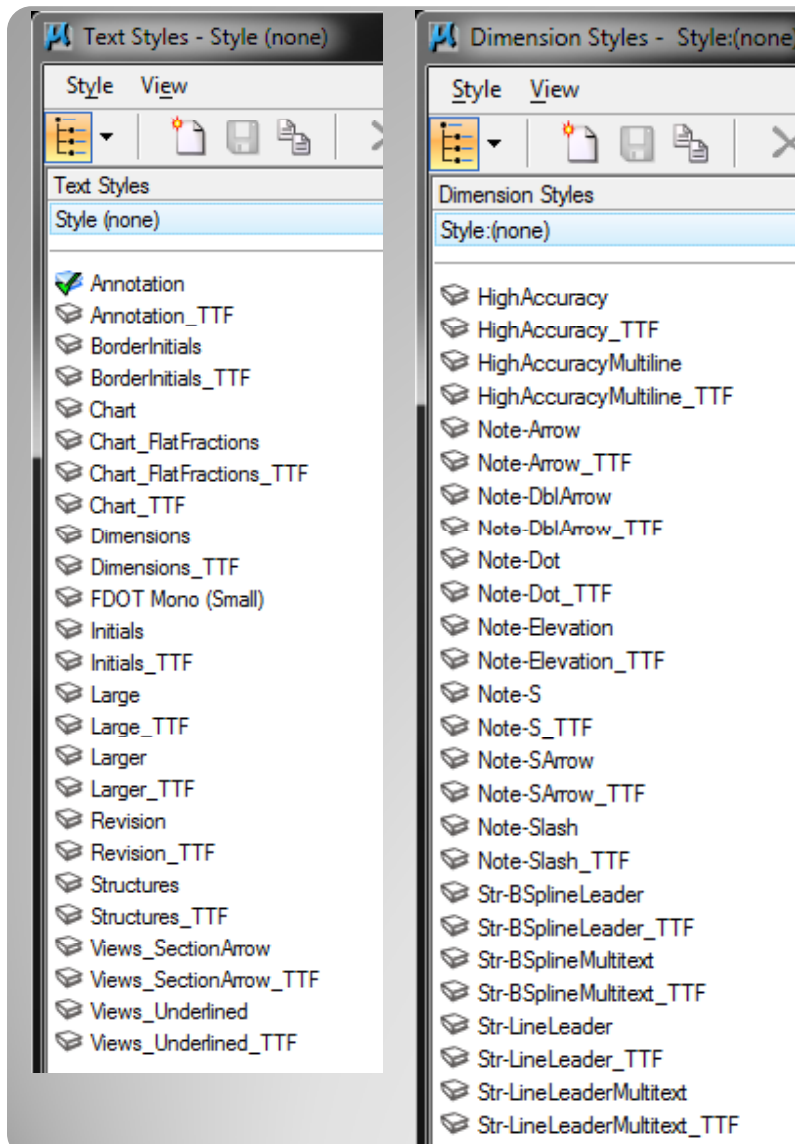
This is a RSC string
This is a TTF string

Anti-alias ON

This is a RSC string
This is a TTF string

Anti-alias OFF

Structures Resources



Legacy fonts resources are not available from CadPilot but are delivered in the FDOT2010 resources to maintain file presentation capabilities.

Legacy resources must be manually selected.

Access To Legacy RSC Resources

- **Developmental Design Standards (DDS)**

- Covered by Structures Design Bulletin C10-03/Roadway Design Bulletin 10-06

"Implementation of Developmental Design Standards Policy"

- Request from District Office for project specific usage.
- If usage is approved by District Office, Central Office delivers a project specific PDF file(s) and the Signatory XML file(s) for the engineer(s) responsible for the design of the standard.
- The pdf cannot be manipulated in any manner without breaking the signatory.

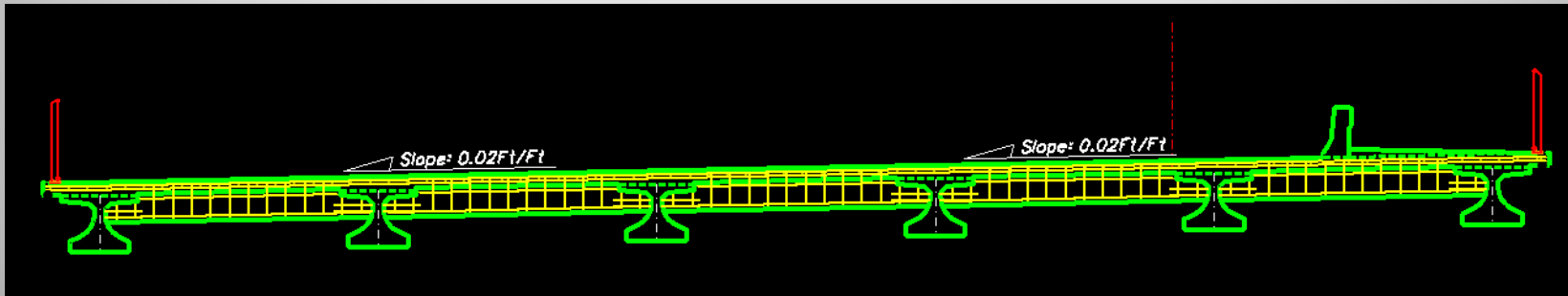
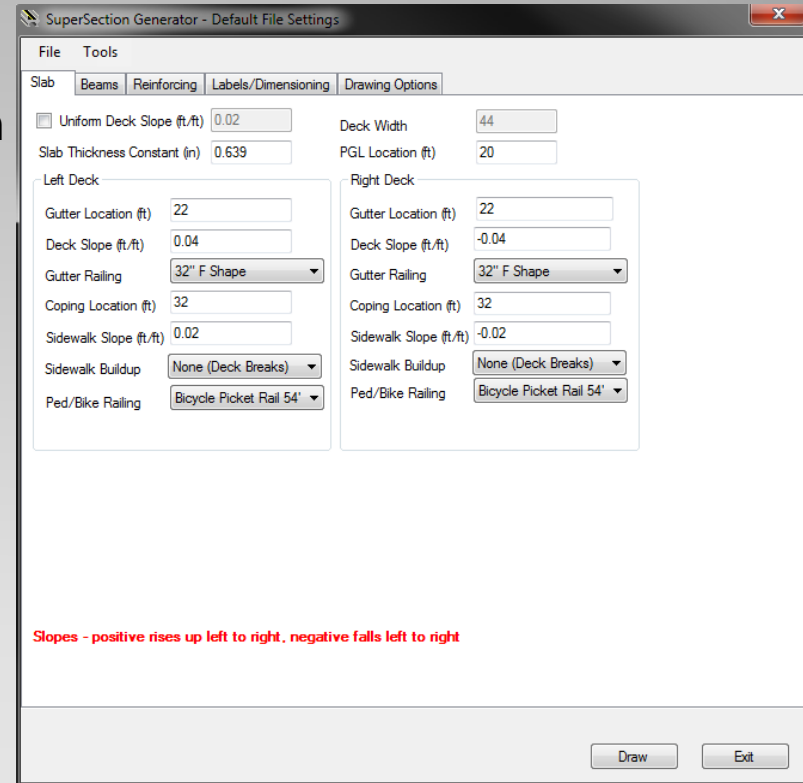
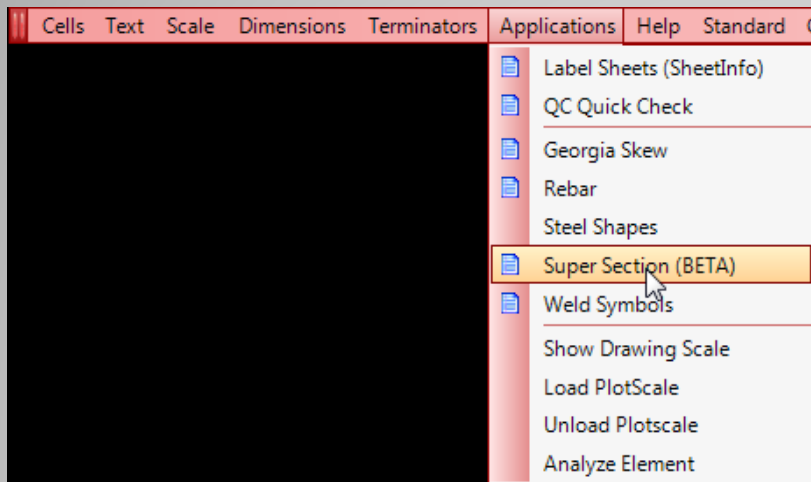
Developmental Standards

- Including Developmental Standards into Bridge Plan sets.

1. Place the DDS pdf file received from Central Office in the project "struct\eng_data" folder (do not place in a bridge specific sub-folder)
2. Place the signatory xml file in the project "_meta_info" folder
3. Add the DDS sheet to the project using EDI, a sheet number should be used so that the DDS sheets appear after the bridge design sheets and before the existing bridge sheets (if they exist).
4. Open the project using PEDDS and authenticate the DDS file against the signatory file.

Developmental Standards

Create Typical Bridge Cross Section Drawings



SuperSection Program

- Currently supports*
 - FlatSlab, Concrete Beam, and Steel Girder Bridges
 - Traffic & Sidewalk Railings
 - Decks & Sidewalks of different slopes
 - Fascia and interior beams of different heights
 - Transverse, Longitudinal, & Diaphragm Reinforcing
- Currently not supported
 - Distribution Steel
 - Autocad

*some functionality is not fully implemented

SuperSection Program

- Demo

SuperSection Program